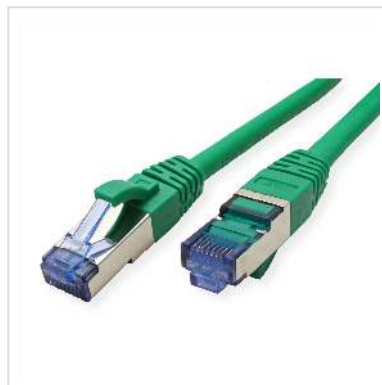
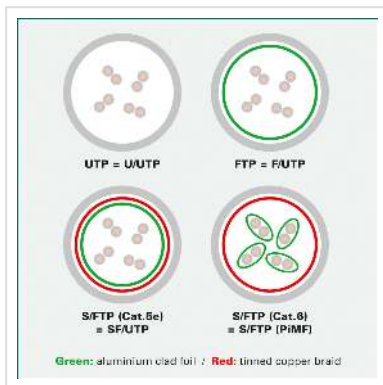


VALUE S/FTP Patch Cord Cat.6A (Class EA), green, 3 m

Product No.	21.99.1943
Manufacturer	VALUE
Manufacturer No.	21.99.1943
EAN (single piece)	7611990123087



The cheap solution for data transfer rates of up to 10 Gbit/s and a bandwidth of 500 MHz. Patch cable for networking connections between devices. Prepared shielded Twisted Pair cable (PiMF) with RJ-45 connectors on both ends. Durable due to moulded kink protection. Flexible cable, suitable for narrow bending. Impedance: 100 Ohm. Contact settings 1:1, in accordance with the EIA/TIA 568 standard. Construction: 8 lines, pairs shielded with aluminium foil, complete braided shielding.

For a structured shielded Cat.6a cabling system we recommend to use the following components:

VALUE Cat.6a S/FTP Cable, Solid Wire, 100 m: 21.99.0881.

Flush Mount Wall Jack for Keystones: 25.16.8579.

Surface Wall Mount Frame: 25.16.8484.

VALUE Cat.6a Keystone, RJ-45, shielded: 26.99.0366.

19" Keystone Patch Panel: 26.11.0359.

VALUE Cat.6a S/FTP Patch Cord, 5 m: 21.99.0865.

Technical specifications

Manufacturer VALUE

Product group	Twisted Pair Cable
Product type	S/FTP Patchcord
Colour	green
Length	3 m
Shield type	SFTP
Transfer quality	Cat6A / Class EA
Quantity of wires	8
Conductor type	Wire
Crossed	No
Colour (Spout)	green
Cable LSOH	Yes
Side 1 Connector Type	RJ-45
Side 1 Connector Gender	Male
Side 2 Connector Type	RJ-45
Side 2 Connector Gender	Male
Connector Type RJ45	Standard
Weight	97.2 g