



NEW PRODUCTS 2024

Value[®]



roline[®]
Designed for Professionals

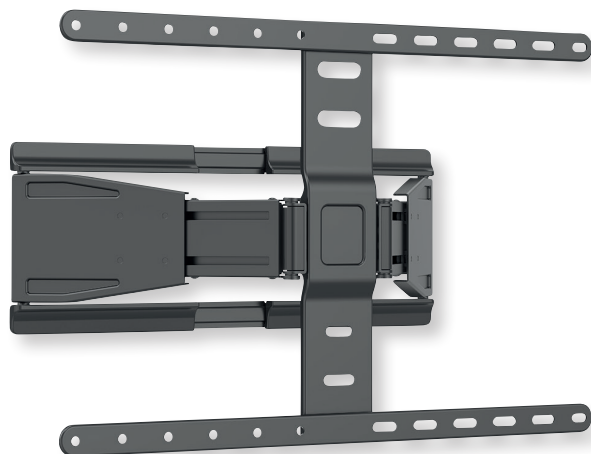


roline[®]
Designed for Professionals



roline[®]
Designed for Professionals

Value[®]



www.secomp-international.com



OUR Commitment to YOU!



Product Selection

All products are acquired from established and experienced manufactures across the globe, which lead the way within the computer accessory industry.

To a large extent they are produced according to our internal specifications. Our products comply with all relevant technical requirements including the RoHS, REACH, WEEE & CE regulations.

Quality Control

All our products are tested systematically according to DIN-ISO 2859 rules. They are tested under real working conditions, which shows confidence in the quality of product we supply to the trade.



On Stock

All catalogue products are on stock or will be available within a short period of time.



Competitive Price

High purchasing volume and long-term relationships with highly specialised manufactures gives you the advantage to buy always at competitive prices 'value for money'.



Service & Support

We provide assistance and guidance for technical questions & product enquiries against our entire Computer Accessory product portfolio.



roline®

Designed for Professionals

A Brand that you can trust!

ROLINE products are developed name for professional users and differ considerably in their quality from comparable products in the IT environment. Their high compatibility in combination with other devices is excellent. Ideally for use in industrial environment.

ROLINE branded products come with a 2-year warranty.

roline® GOLD

High quality without any compromises!

To meet even the most demanding requirements, we have improved our PC and multimedia cables of our own brand ROLINE and launched our product line ROLINE GOLD already years ago in terms of shielding and contact safety in an even higher quality.

ROLINE GOLD products come with a 2-year warranty.

roline®
recycled material



roline®
green

Environment-friendly!

ROLINE RM products are made from more than 50% recycled materials, so we can conserve additional natural resources, save energy and reduce the production of new material. Our commitment also concerns the packaging in which these environmentally responsible products are packed. ROLINE RM packaging is made from 100% recycled material, minimizing waste and underlining our engagement to responsible packaging.

ROLINE GREEN is a range of known ROLINE quality products marked only with a paper tag and build with TPE or LSOH material, without plastic bags and without plastic cable straps for use in eco-friendly environments.

ROLINE RM and ROLINE GREEN products come with a 2-year warranty.

Value®

Best Value for Money!

Quality products and highly aggressive pricing makes the VALUE range ideally suited for Distribution Partners. All VALUE products are supplied with a 1-year warranty.

ROLINE UTP DataCenter PatchCord Cat.6A (Cl. EA), LSOH, Slim, UltraShort Connector

DATA CENTER
Product

Cat. 6A
Class EA

U/UTP

- Patch cable for networking connections between devices.
- Prepared unshielded Twisted Pair cable with RJ-45 connectors on both ends.
- Durable due to moulded kink protection.
- **Slim, flexible cable, suitable for narrow bending.**
- Contact settings 1:1, in accordance with the EIA/TIA 568 standard.
- Construction: 4-pair stranded copper wire.
- Colour: grey / black / white



Available January 2025

Halogenfree
Flame retardant
Low Smoke

roline[®]
Designed for Professionals



Length	grey	black	white	– P.U.
0.5 m	21.15.4400	21.15.4460	21.15.4470	– 100
1 m	21.15.4401	21.15.4461	21.15.4471	– 100
1.5 m	21.15.4404	21.15.4464	21.15.4474	– 100
2 m	21.15.4402	21.15.4462	21.15.4472	– 100
3 m	21.15.4403	21.15.4463	21.15.4473	– 50
5 m	21.15.4405	21.15.4465	21.15.4475	– 50

ROLINE U/FTP DataCenter PatchCord Cat.6A (Cl.EA), LSOH, Slim, UltraShort Connector

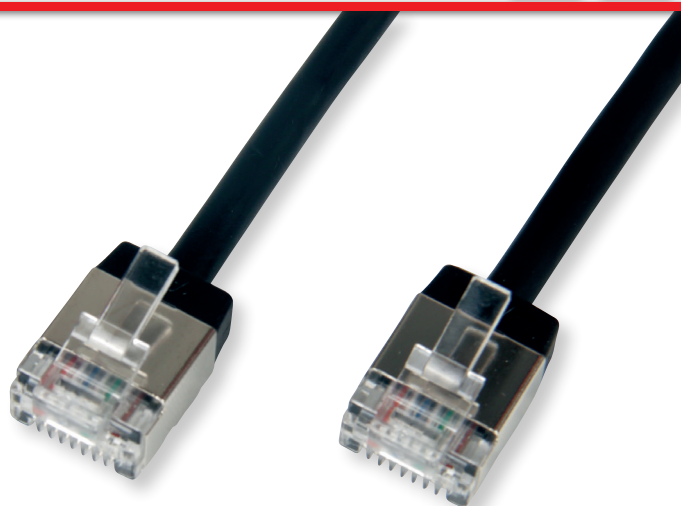
DATA CENTER
Product

Cat. 6A
Class EA

U/FTP

Category 6A twisted-pair patch cable with shielded RJ-45 connectors on both sides. Particularly thin and flexible cable with individual pairs of wires in aluminium-laminated foil for use in confined spaces, such as in data centres.

- Durable thanks to moulded-on kink protection
- Suitable as patch cable in patch panels or as device connection cable and intended for use in the LAN
- Contact assignment: 1:1 according to EIA/TIA568, 8 cores
- Structure: 8 cores stranded wire, pairs shielded with alu-laminated foil
- Elastic and very flexible thanks to TPE outer sheath- best properties for cable ducts and similar applications where not much space is available



Available January 2025

Halogenfree
Flame retardant
Low Smoke

roline[®]
Designed for Professionals



Length	grey	black	white	– P.U.
0.5 m	21.15.4500	21.15.4560	21.15.4570	– 100
1 m	21.15.4501	21.15.4561	21.15.4571	– 100
1.5 m	21.15.4504	21.15.4564	21.15.4574	– 100
2 m	21.15.4502	21.15.4562	21.15.4572	– 100
3 m	21.15.4503	21.15.4563	21.15.4573	– 50
5 m	21.15.4505	21.15.4565	21.15.4575	– 50

ROLINE S/FTP Patch Cord Cat.6A / Class EA, Stranded, TPE, LSOHDATA CENTER
ProductCat.6A
Class EA

S/FTP

Assembled double shielded (PiMF) twisted pair cable category 6A with shielded RJ-45 connectors on both sides. For connecting an IP camera.

Patch cord for networking connections between devices in combination with application (e.g. connection to surveillance cameras)

- Prepared double shielded Twisted Pair cable with screened RJ-45 connectors on both ends
- Durable due to moulded kink protection
- Suitable for PoE applications and multimedia applications where the extension is working over TP
- High quality plugs with gold plated contacts
- Contact settings 1:1, in accordance with the EIA/TIA 568 standard
- Construction: 4-pair stranded copper wire, complete braid shielding, pairs shielded with aluminium foil
- Tangle free



Order-No. – P.U.

ROLINE S/FTP Patch Cord Cat.6A / Class EA, Stranded, TPE, LSOH, tangle free, grey, 0.3 m	21.15.4318	– 100
ROLINE S/FTP Patch Cord Cat.6A / Class EA, Stranded, TPE, LSOH, tangle free, grey, 0.5 m	21.15.4310	– 100
ROLINE S/FTP Patch Cord Cat.6A / Class EA, Stranded, TPE, LSOH, tangle free, grey, 1 m	21.15.4311	– 100
ROLINE S/FTP Patch Cord Cat.6A / Class EA, Stranded, TPE, LSOH, tangle free, grey, 1.5 m	21.15.4314	– 100
ROLINE S/FTP Patch Cord Cat.6A / Class EA, Stranded, TPE, LSOH, tangle free, grey, 2 m	21.15.4312	– 100
ROLINE S/FTP Patch Cord Cat.6A / Class EA, Stranded, TPE, LSOH, tangle free, grey, 3 m	21.15.4313	– 50
ROLINE S/FTP Patch Cord Cat.6A / Class EA, Stranded, TPE, LSOH, tangle free, grey, 5 m	21.15.4315	– 50
ROLINE S/FTP Patch Cord Cat.6A / Class EA, Stranded, TPE, LSOH, tangle free, grey, 7 m	21.15.4316	– 40
ROLINE S/FTP Patch Cord Cat.6A / Class EA, Stranded, TPE, LSOH, tangle free, grey, 10 m	21.15.4317	– 40

Halogenfree
Flame retardant
Low Smoke

Available January 2025

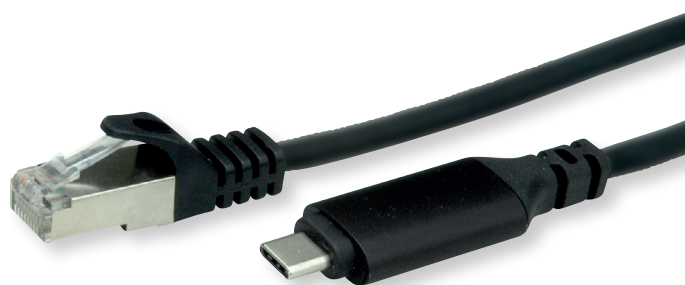
roline®
Designed for Professionals

**ROLINE USB 3.2 Gen 2 to Gigabit Ethernet Cable Converter**

With this converter you connect your PC or notebook with USB 3.1 / USB 3.2 Gen 2 Type C interface to a Gigabit Ethernet network.

This converter is a cost effective solution to convert a USB 3.1 / USB 3.2 Gen 2 port into a 10/100/1000Base-T Ethernet port

- Supports 10/100/1000 Mbit/s auto-sensing capability
- Supports USB 3.1 / USB 3.2 Gen 2
- Type C Connector
- Bus powered
- Supports both full-duplex and half-duplex operation in Gigabit Ethernet
- Supports Windows XP/Vista/7/8/10, Mac OS X
- Contents: Converter cable



Order-No. – P.U.

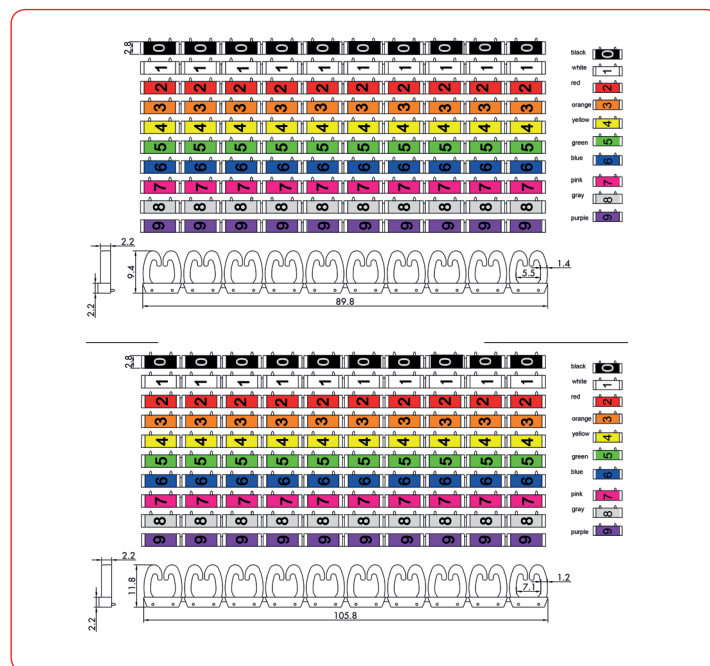
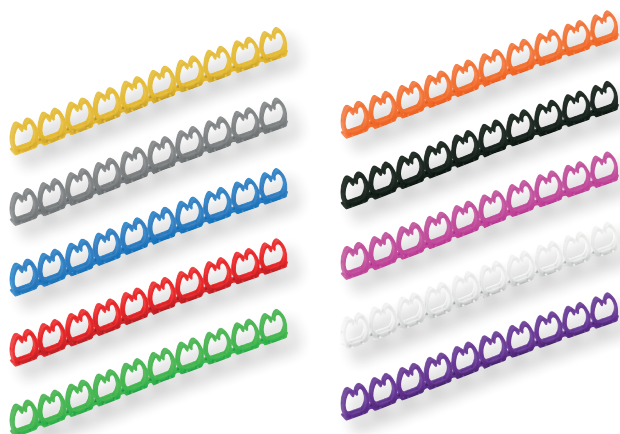
ROLINE USB 3.2 Gen 2 to Gigabit Ethernet CableConverter, 1m	12.02.1165	– 10
ROLINE USB 3.2 Gen 2 to Gigabit Ethernet CableConverter, 1.5m	12.02.1166	– 10
ROLINE USB 3.2 Gen 2 to Gigabit Ethernet CableConverter, 2m	12.02.1167	– 10
ROLINE USB 3.2 Gen 2 to Gigabit Ethernet CableConverter, 3m	12.02.1168	– 10
ROLINE USB 3.2 Gen 2 to Gigabit Ethernet CableConverter, 5m	12.02.1169	– 10

Available December 2024

roline®
Designed for Professionals

VALUE Cable Marker Set for Patchcables

- Colored marking rings, for marking e.g. network cables with an outer diameter of 4-5.5mm / 5-6.5mm
- 10 x 10 pieces (various colors)
- Cable identification with numbers from 0 to 9 for marking and differentiation
- Marking solution for cabling in industry, construction and trade
- Can be used for cable ducts and cable bundles
- Cable marking clips can also be used after cable installation
- Small pins and sockets allow the clips to be connected to each other
- Package unit 10 connectors / bag



Order-No. – P.U.

VALUE Cable Marker Set for Patchcables, 10 pcs., 4 - 5.5mm

25.99.5255 – 20

VALUE Cable Marker Set for Patchcables, 10 pcs., 5 - 6.5mm

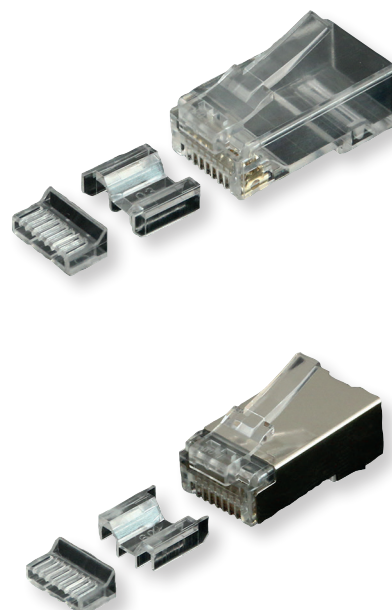
25.99.5256 – 20

Value[®]

Available January 2025

ROLINE Cat.6A Modular Plug, Un-/Shielded, for stranded and solid wire, with Insert, 10 pcs

- Cat.6A modular plugs, 8p8c
- Unshielded / Shielded
- Gold plated contacts
- For solid wire / stranded wire
- 21.99.3098 - suitable for AWG23 ~ AWG26 cables
- 21.17.3099 - suitable for AWG24 ~ AWG26 cables
- For round cables
- With insert
- Package unit 10 connectors



Order-No. – P.U.

ROLINE Cat.6A Modular Plug, Unshielded, for stranded and solid wire, with Insert, 10 pcs.

21.17.3098 – 5

ROLINE Cat.6A Modular Plug, Shielded, for stranded and solid wire, with Insert, 10 pcs.

21.17.3099 – 5

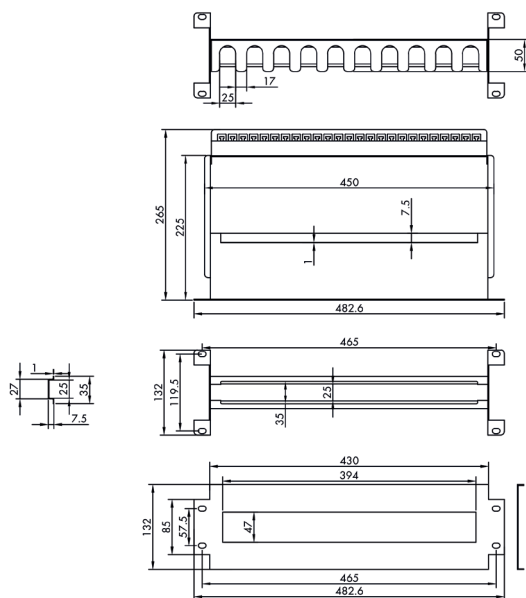
roline[®]
Designed for Professionals

VALUE 19" Support Frame for DIN Rail-Mounted Devices, 3U

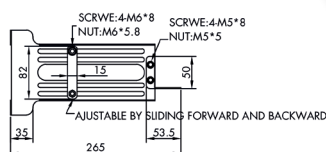
DATA CENTER
Product

19-inch Support frame for DIN Rail-Mounted Devices, 3U

- Frame for the installation/use of DIN rail-mounted electrical equipment e.g. network switches, media converters...
- With removable metal cover
- Cable management possibility at the rear side of the frame
- DIN-rail element can be used horizontally or vertically
- max. load capacity: 10 kg



Available November 2024



Order-No. – P.U.

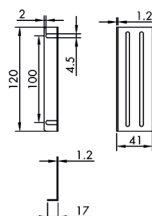
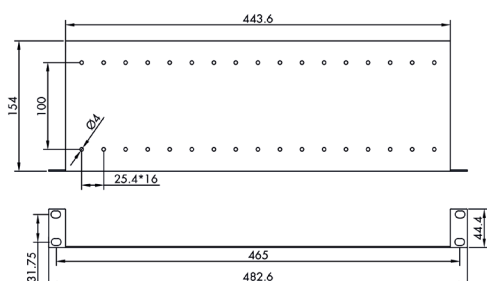
VALUE 19" Support Frame for DIN Rail-Mounted Devices, 3U, black 26.99.0340 – 5

VALUE 19" Shelf Rack, 1U, with 2 adjustable dividers

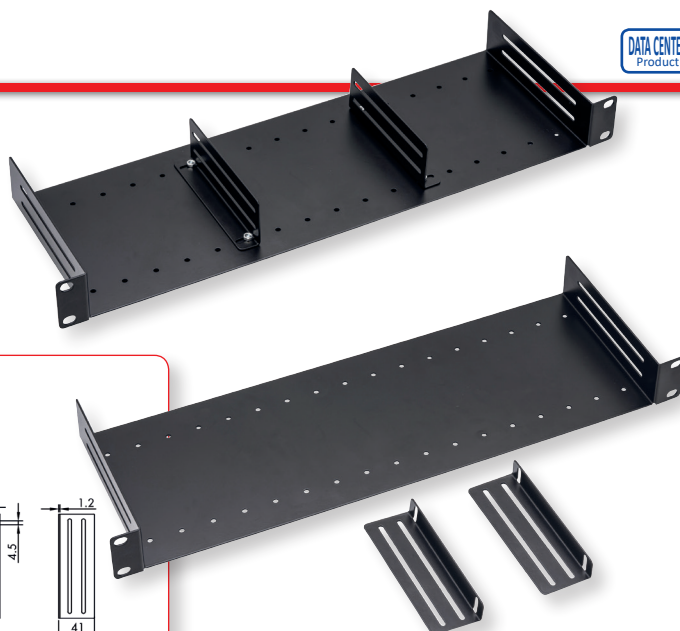
DATA CENTER
Product

19-inch Shelf Rack

- Suitable for Desktop Patch Panels, Switches, etc.
- max. load capacity: 10 kg
- 2 adjustable dividers included



Available November 2024



Order-No. – P.U.

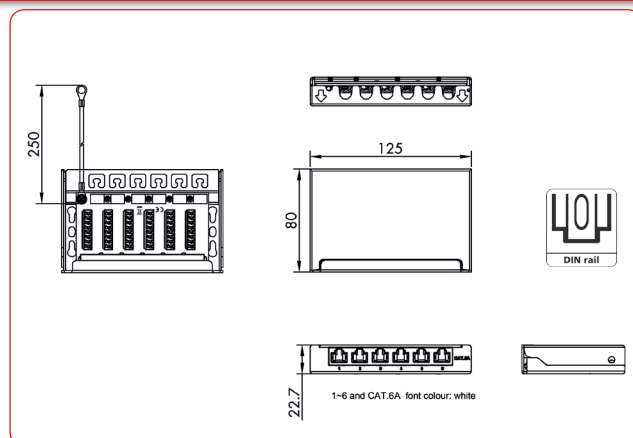
VALUE 19" Shelf Rack, 1U, with 2 adjustable dividers

26.99.0341 – 5

ROLINE Mini Patchpanel, Cat.6A/Cl.EA, 0.5UH, 6x RJ45 Ports, Shielded

- 0.5 U – Mini Patch panel
- Assembling of cables takes place over LSA-plus
- Color code based on the standard EIA/TIA 568 A and 568 B
- 6x RJ45 ports
- Color: Black

• Remark: DIN Rail available



roline[®]
Designed for Professionals

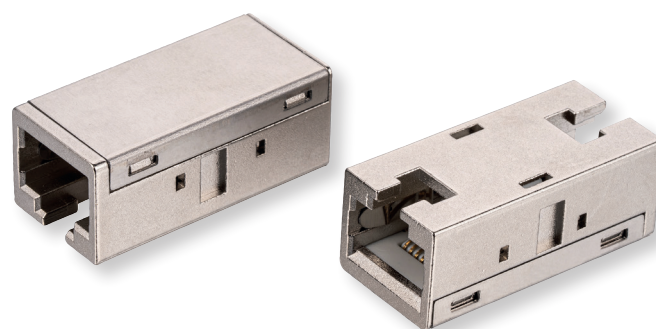
Order-No. – P.U.
ROLINE Mini Patchpanel, Cat.6A/Cl.EA, 0.5U, 6x RJ45 Ports, shielded, black 26.11.0299 – 10

ROLINE RJ-45 Modular Coupler, Cat.6A (Class EA), Shielded

Coupler for the connection or extension of RJ-45 network cables

- Shielded metal housing to safe the signals against electrical and magnetical interferences
- The coupler is able to extend Cat. 6A cables
- 8 contacts, 1:1 connected
- Colour: silver
- REMARK: Picture shows 2 units

Easy Installation: insert the RJ45 cable



Available November 2024

roline[®]
Designed for Professionals

Order-No. – P.U.
ROLINE RJ-45 Modular Coupler, Cat.6A (Class EA), shielded, silver, metal housing 21.17.3097 – 10

ROLINE FO Panel 19" unloaded, 16x Ports (Keystones)

For applications like: Data centres, premise installations, telecommunication networks, Data communication

- Offers a flexible, multi functional solution allowing an easy access during installation or re-work with no disturbance of the existing cable or fibres
- Robust 1U sliding patch panel designed to house 16 keystones
- Fiber Optic Patch Panel for 16x Ports Keystones
- The tray is locked in place with 2x metal screws
- Offers 2 cable entry points (PG13), cables can be fixed with a gland buffer
- Contents: Panel, PG13.5 cable clamp 2 pcs., M6 screw and nuts 4 sets cable tie 6 pcs.



Available January 2025

roline[®]
Designed for Professionals

Order-No. – P.U.
ROLINE FO Panel 19" unloaded, 16x Ports (Keystones), black 21.17.0351 – 5

ROLINE FO Jumper Cable 50/125µm OM4, LC/LC, Data Center, UNIBOOT

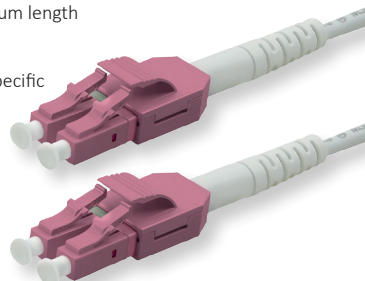
ROLINE Fiber Optic Uniboot LSOH Patch Cord LC/LC in OM4 quality for high-performance fiber optic cabling in excellent ROLINE quality. A uniboot connector is ideal for a high-density environment. Compared to the conventional duplex connector, the design is more compact and only one cable is used for two lines, which enables usage in a high-density environment. Changing the fiber polarity is easily possible without special tools.

- Security for the future! The OM4 fiber and connector quality with very low insertion ensure an excellent quality at very high bandwidths.
- It supports 10 Gb/s Ethernet, Fibre Channel, and OIF applications to 550 meters, extends the system cost benefits to ultra long building backbones and medium length campus backbones.
- Material and clothing in ROLINE quality
- Modal Bandwidth: 4700 MHz-km (this bandwidth is based on application-specific implementation of the EMBC requirements)
- Duplex cables with fiber type Multi-mode 50/125µm, OM4
- Uniboot for high-density environments
- Fiber polarity can be changed easily without special tools

roline®

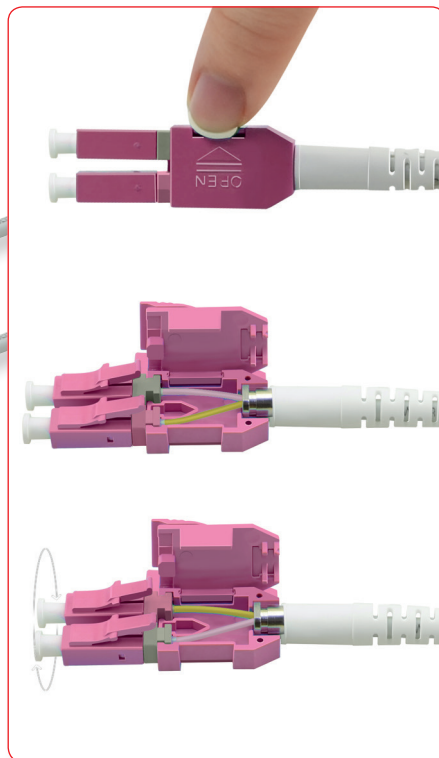
Designed for Professionals

Halogenfree
Flame retardant
Low Smoke



Order-No. – P.U.

ROLINE FO Jumper Cable 50/125µm OM4, LC/LC, Data Center, UNIBOOT, violet, 0.5 m	21.15.8650 – 20
ROLINE FO Jumper Cable 50/125µm OM4, LC/LC, Data Center, UNIBOOT, violet, 1 m	21.15.8651 – 10
ROLINE FO Jumper Cable 50/125µm OM4, LC/LC, Data Center, UNIBOOT, violet, 2 m	21.15.8652 – 10
ROLINE FO Jumper Cable 50/125µm OM4, LC/LC, Data Center, UNIBOOT, violet, 3 m	21.15.8653 – 10
ROLINE FO Jumper Cable 50/125µm OM4, LC/LC, Data Center, UNIBOOT, violet, 5 m	21.15.8654 – 5
ROLINE FO Jumper Cable 50/125µm OM4, LC/LC, Data Center, UNIBOOT, violet, 7 m	21.15.8655 – 5
ROLINE FO Jumper Cable 50/125µm OM4, LC/LC, Data Center, UNIBOOT, violet, 10 m	21.15.8656 – 5
ROLINE FO Jumper Cable 50/125µm OM4, LC/LC, Data Center, UNIBOOT, violet, 15 m	21.15.8657 – 5
ROLINE FO Jumper Cable 50/125µm OM4, LC/LC, Data Center, UNIBOOT, violet, 20 m	21.15.8658 – 5

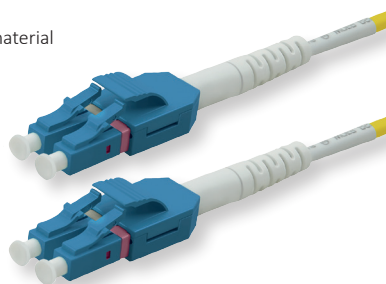


Available January 2025

ROLINE Fibre Optic Jumper Cable duplex, 9/125µm, OS2, LC/LC, UNIBOOT

ROLINE Fiber Optic Uniboot LSOH Patch Cord LC/LC in OS2 quality. A uniboot connector is ideal for a high-density environment. Compared to the conventional duplex connector, the design is more compact and only one cable is used for two lines, which enables usage in a high-density environment. Changing the fiber polarity is easily possible without special tools.

- Cable sheathing made of halogen-free, low smoke and flame-retardant material
- Assembled with high-quality connectors with ceramic ferrule
- Core structure: Duplex cable I-VH
- High tensile strength due to aramid yarn strain relief
- Uniboot Patch Cord for high-density environments
- Fiber polarity can be changed easily without special tools



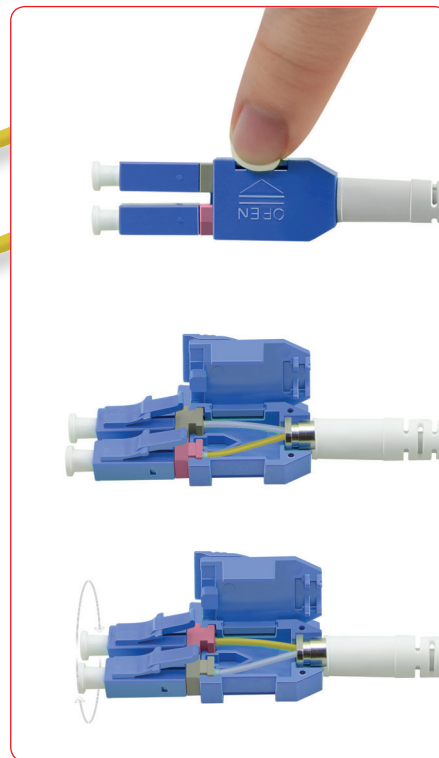
roline®

Designed for Professionals

Halogenfree
Flame retardant
Low Smoke

Order-No. – P.U.

ROLINE Fibre Optic Jumper Cable duplex, 9/125µm, OS2, LC/LC, UNIBOOT, yellow, 0.5 m	21.15.8640 – 20
ROLINE Fibre Optic Jumper Cable duplex, 9/125µm, OS2, LC/LC, UNIBOOT, yellow, 1 m	21.15.8641 – 10
ROLINE Fibre Optic Jumper Cable duplex, 9/125µm, OS2, LC/LC, UNIBOOT, yellow, 2 m	21.15.8642 – 10
ROLINE Fibre Optic Jumper Cable duplex, 9/125µm, OS2, LC/LC, UNIBOOT, yellow, 3 m	21.15.8643 – 10
ROLINE Fibre Optic Jumper Cable duplex, 9/125µm, OS2, LC/LC, UNIBOOT, yellow, 5 m	21.15.8644 – 5
ROLINE Fibre Optic Jumper Cable duplex, 9/125µm, OS2, LC/LC, UNIBOOT, yellow, 7 m	21.15.8645 – 5
ROLINE Fibre Optic Jumper Cable duplex, 9/125µm, OS2, LC/LC, UNIBOOT, yellow, 10 m	21.15.8646 – 5
ROLINE Fibre Optic Jumper Cable duplex, 9/125µm, OS2, LC/LC, UNIBOOT, yellow, 15 m	21.15.8647 – 5
ROLINE Fibre Optic Jumper Cable duplex, 9/125µm, OS2, LC/LC, UNIBOOT, yellow, 20 m	21.15.8648 – 5

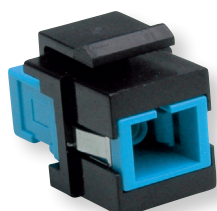


Available January 2025

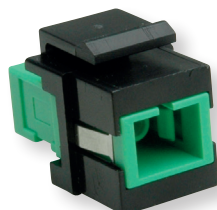
ROLINE Fiber Optic Keystone Jacks

- ROLINE quality keystone adapter for fiber optic cabling
- For installation in fiber optic front plates or for extending fiber optic jumper cables
- High quality plastic housing with keystone technique
- Sleeve of the ferrule made of phosphor-bronze (PB)
- For Multimode fiber optic jumper cables
- Can be used with 19" Patch Panel Module frame (26.11.0357 or 26.11.0356)
- Can be used together with a Flush Mount Wall Jack for keystones, 2-port (25.16.8579) or with a Surface Wall Mount Frame (25.16.8484)

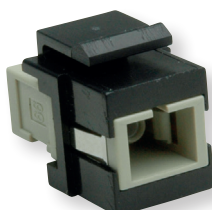
21.17.0051



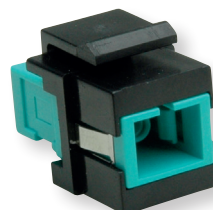
21.17.0052



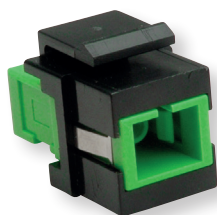
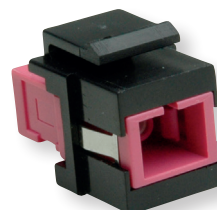
21.17.0053



21.17.0054



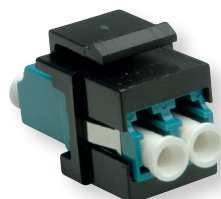
21.17.0055



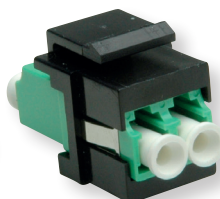
21.17.0056



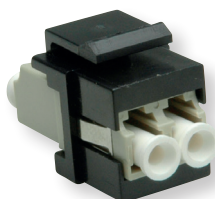
Available January 2025



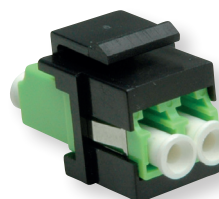
21.17.0057



21.17.0058



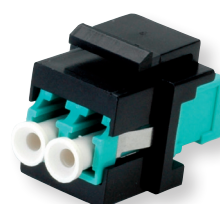
21.17.0059



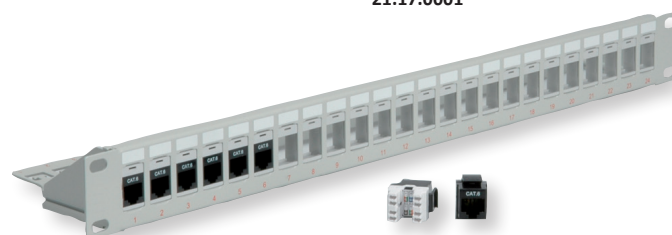
21.17.0060



21.17.0002



21.17.0001



	Order-No. – P.U.
ROLINE Fiber Optic Keystone Jack, SC Simplex, Singlemode, OS2	21.17.0051 – 20
ROLINE Fiber Optic Keystone Jack, SC Simplex, Singlemode, OS2, APC	21.17.0052 – 20
ROLINE Fiber Optic Keystone Jack, SC Simplex, Multimode, OM2	21.17.0053 – 20
ROLINE Fiber Optic Keystone Jack, SC Simplex, Multimode, OM3	21.17.0054 – 20
ROLINE Fiber Optic Keystone Jack, SC Simplex, Multimode, OM4	21.17.0055 – 20
ROLINE Fiber Optic Keystone Jack, SC Simplex, Multimode, OM5	21.17.0056 – 20
ROLINE Fiber Optic Keystone Jack, LC/LC Duplex, Multimode, OM3	21.17.0001 – 20
ROLINE Fiber Optic Keystone Jack, LC/LC Duplex, Multimode, OM4	21.17.0002 – 20
ROLINE Fiber Optic Keystone Jack, LC/LC Duplex, Singlemode, OS2	21.17.0057 – 20
ROLINE Fiber Optic Keystone Jack, LC/LC Duplex, Singlemode, OS2, APC	21.17.0058 – 20
ROLINE Fiber Optic Keystone Jack, LC/LC Duplex, Multimode, OM2	21.17.0059 – 20
ROLINE Fiber Optic Keystone Jack, LC/LC Duplex, Multimode, OM5	21.17.0060 – 20
Keystone 19" Module frame Cat.5/Cat.6, 24 P., blank, UTP, light grey	26.11.0356 – 5
Keystone 19" Module frame Cat.5/Cat.6, 24 P., blank, UTP, black	26.11.0357 – 5
Flush Mount Wall Outlet for Keystones, 2-port	25.16.8579 – 20
Surface Wall Mount Frame	25.16.8484 – 20

roline®
Designed for Professionals

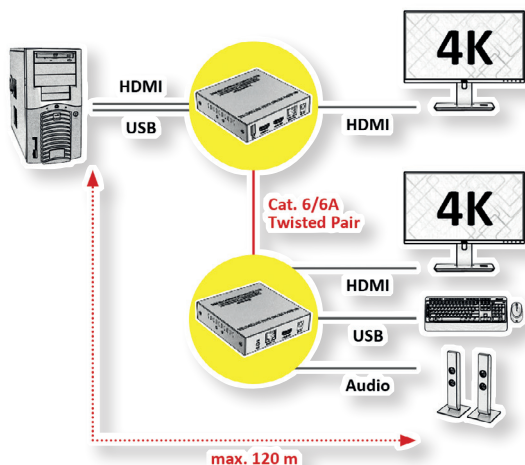
VALUE KVM Extender over Cat.6/6A, HDMI, max. 120m

4K

2160p
UHD-1

This product is a 4K@60Hz HDMI KVM extender kit consisting of a transmitter and a receiver, using ipcolor STREAM technology for high-definition, low-latency transmission. Supports HDMI loop out, KVM, and RS-232 passthrough, and can be used in meetings, home entertainment, educational presentations, etc...

- Adopting ipcolor STREAM technology you can realize high-definition and low-latency transmission
- Support up to 3840 x 2160@60Hz resolution, backwards compatible
- Transmission distance up to 120 meters, with Cat.6/6A or above network cables
- Support one-to-one or one-to-many connections through the gigabit switch
- Support RS-232 passthrough
- The transmitter supports HDMI loop out
- Support KVM control signal passback
- The transmitter has a 3.5 mm audio input for sound embedding, the receiver has an independent 3.5 mm audio output
- Stable, metal housing



Available December 2024

Order-No. – P.U.

VALUE KVM Extender over Cat.6/6A, HDMI, max. 120m

14.99.3044 – 1

VALUE KVM Extender over Cat.6/6A, HDMI 4K30, max. 40m

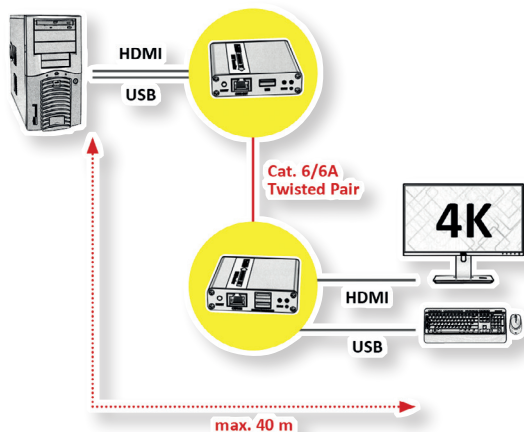
4K

2160p
UHD-1

This HDMI KVM Extender includes a transmitter and a receiver and allows the HDMI signal to be transmitted up to 70 meters at 1080p resolution using Cat6/6A network cables. Suitable for outdoor advertising, monitor system, home entertainment, conferences, etc.

KVM extension over up to 40 m through the Cat.6/6A connection (4K30Hz)

- Zero latency
- Point-to-point connection configuration
- Support up to 4K@30Hz resolution
- Support 1080p@60Hz transmission distance up to 70m, 4K@30Hz up to 40m, by using Cat.6/6A network cables
- Support KVM functionality
- Support HDR10
- Support PoC network cable power supply, only TX power supply is needed
- Automatically adjusts parameters to match different network cables and achieve the best display performance



Available December 2024

Order-No. – P.U.

VALUE KVM Extender over Cat.6/6A, HDMI 4K30, max. 40m

14.99.3043 – 4

ROLINE Dual Head KVM Switch, 1 User - 2 PCs, DP/HDMI, Audio

The 2-Port 4K Dual Head HDMI/DP KVM Switch allows the control of two computers with 4K dual HDMI video output via a single console set of USB keyboard/mouse/hub, microphone, speaker and display.

Has built-in USB 2.0 compliant and 3.5mm mini stereo ports, which allows the sharing of USB keyboard/mouse/hub, speaker and microphone among the connected computers.

- Support video resolution up to Ultra HD 4K/ 60Hz, 3840x2160@60Hz 4:4:4
- One USB console controls two PC sources
- Support Dual-monitor, DisplayPort-in / HDMI-in (PC side) and HDMI-out (Console side)
- Displayport 1.2 and HDCP 2.2 compliant
- Human Interface Devices (HID) x 2 for Keyboard/Mouse, and USB 2.0 Hub x 2 for peripherals sharing
- Audio/Microphone enabled
- Selection switching ways: pushbutton and keyboard hotkeys
- LED status
- Instant switching interval
- No software needed
- Easy to install- no software required
- Hot-pluggable
- Supported Operating Systems: Windows, Mac

Console Port:

- 2x HDMI female for video output
- 2x USB Type A female for HID devices
- 2x USB Type A female for USB2.0 hub
- 2x 3.5-mm audio phone jack

PC Port:

- 2x HDMI female for video input
- 2x DisplayPort female for video input
- 2x USB Type B female
- 4x 3.5-mm audio phone jack

Other: 2.1-mm barrel plug for power

- Contents: Switch, power supply, manual

Available February 2025

roline[®]
Designed for Professionals

Order-No. – P.U.

ROLINE Dual Head KVM Switch, 1 User - 2 PCs, DP/HDMI, Audio

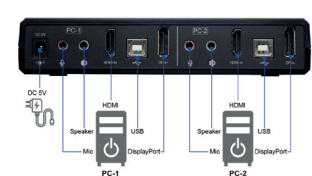
14.01.3047 – 1



Console Side (Front View)



PC Side (Rear View)



ROLINE USB 3.2 Gen2 Hub, 4 Ports (2x A + 2x C), +PD (100W)

The hub with USB C connection cable allows the connection of up to four USB peripherals.

- 4x USB ports
- 2x port USB3.2Gen2 type A Female 10Gbps
- 2x port USB3.2Gen2 type C Female 10Gbps
- Supports PD (Power Delivery) 100W
- Full compliance with USB 2.0 / 1.1 specification
- Plug & play, no additional drivers required
- USB Bus powered
- Housing dimensions: 70 x 46 x 15 mm
- Connectors: 1x USB Type C Male and 2x USB Type A + 2x USB Type C Female
- Supports Windows XP / 7 / 8 / 10

Note: According to the current specifications of USB.org we have adapted the technical data of our USB 3 products. The new designation for the already known USB specifications has been changed to USB 3.2 Gen 1 (formerly USB 3.0 / USB 3.1 Gen 1) and USB 3.2 Gen 2 (formerly USB 3.1 / USB 3.1 Gen 2).

- Contents: hub

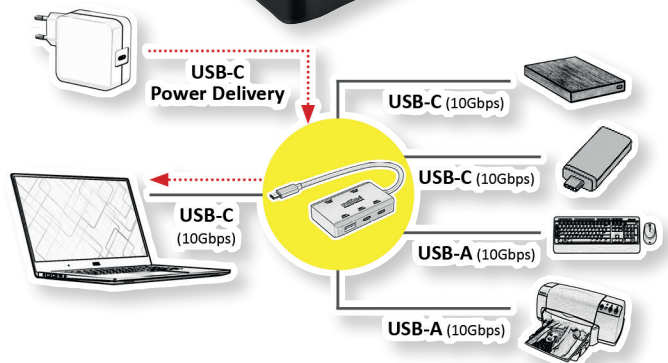
Available November 2024

roline[®]
Designed for Professionals

Order-No. – P.U.

ROLINE USB 3.2 Gen2 Hub, 4 Ports (2x A + 2x C), +PD (100W),

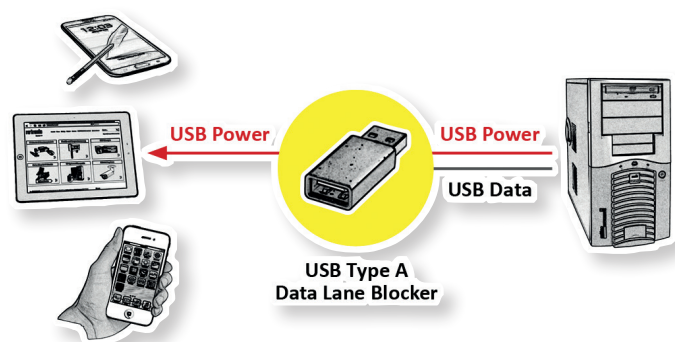
14.02.5060 – 10



ROLINE USB Data Lane Blocker, A+C

The USB Type A+C Port Blocker blocks the data lanes of the used USB port and thus protects your end device from unwanted access or malware - nothing but power is transmitted. The solution is especially useful in foreign environments where USB sockets can be manipulated or hijacked comparatively easily, such as in hotels, or anchorage points like airports or train stations.

- Eliminates the risk of becoming the target of attacks via foreign USB sockets and reduces the risk of malware / malicious software being transferred to the device
- Suitable for IT equipment in any hotel, office or public environment such as schools, museums, trade fairs or other places
- Ideally suited for anchor points such as airports and railway stations
- Does not cause conflict with the existing IT infrastructure
- Prevents data exchange by blocking the data lanes- only power is transmitted to your end device
- Safe charging without complications
- Contents: 1x USB Data Blocker Cable



ROLINE USB Data Lane Blocker, A+C

Order-No. – P.U.

11.02.8349 – 10

roline[®]
Designed for Professionals

Available November 2024

ROLINE USB2.0 Retractable Cable Type C, 60W, C-C, M/M

- High quality USB 2.0 cable with improved shielding
- With the reversible Type C connectors at both ends
- Gold-plated contacts for low wear at high plugging cycles
- Suitable for data transfer rates of up to 480 Mbit/s
- Supports USB Power Delivery to 20V / 3A



ROLINE USB2.0 Retractable Cable Type C, 60W, C-C, M/M, black, 1.2 m

Order-No. – P.U.

11.02.8420 – 10

roline[®]
Designed for Professionals

On stock

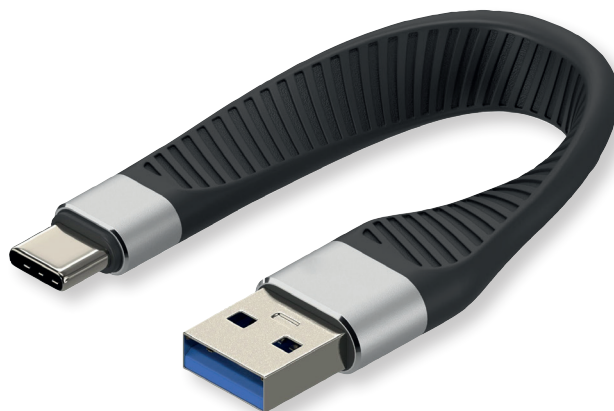
ROLINE USB 3.2 Gen 2 Silicone Cable, Emark, C-A

10Gbit/s

ROLINE USB 3.1 / USB 3.2 Gen 2 silicone cable with data transfer rates of up to 10 Gbit/s. The silicone-sheathed flat cable not only looks great, but also allows extremely flexible use thanks to its small bending radius.

- USB 3.1 / USB 3.2 Gen 2 cable in high quality
- With USB type C / A connectors
- Suitable for data transfer rates of up to 10 Gbit/s
- Rugged aluminum plugs and a flexible, flat silicone cable for optimal durability
- Colour: black

Note: According to the current specifications of USB.org we have adapted the technical data of our USB 3 products. The new designation for the already known USB specifications has been changed to USB 3.2 Gen 1 (formerly USB 3.0 / USB 3.1 Gen 1) and USB 3.2 Gen 2 (formerly USB 3.1 / USB 3.1 Gen 2).



	Order-No. – P.U.
ROLINE USB 3.2 Gen 2 Silicone Cable, Emark, C-A, M/F, black, 11 cm	11.02.9016 – 20
ROLINE USB 3.2 Gen 2 Silicone Cable, Emark, C-A, M/M, black, 11 cm	11.02.9017 – 20

roline®
Designed for Professionals

Available December 2024

VALUE Type C - HDMI Adapter, 4K30

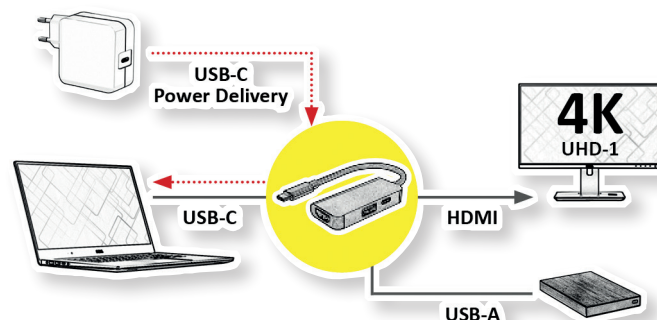
Connect your Macbook, Ultrabook, Notebook/Laptop or PC with USB Type C interface to an HDMI display or projector - with a maximum resolution of up to 3840x2160 @30Hz! Charge your device simultaneously over PD (Power Delivery) and connect an additional peripheral or other device like a SSD to the additional USB Type A Port.

- USB 3.1 / USB 3.2 Gen 2 Type C to HDMI adapter for MacBook, Ultrabook, Notebook/Laptop or PC
- Mirror or extend the display of your device to any HDMI monitor or projector
- Maximum resolution: 3840x2160 @30Hz
- No additional power supply required
- USB Type C PD: Power Delivery Function for charging of devices via the additional Type C connection
- Connectors: HDMI Female and Type C Male; additionally, 1x USB 3.0 / USB 3.2 Gen 1 Type A and 1x USB Type C PD
- Cable length: ca. 12 cm

Remark: Support of „Alternate Mode (DP Alt Mode)“ required

Note: According to the current specifications of USB.org we have adapted the technical data of our USB 3 products. The new designation for the already known USB specifications has been changed to USB 3.2 Gen 1 (formerly USB 3.0 / USB 3.1 Gen 1) and USB 3.2 Gen 2 (formerly USB 3.1 / USB 3.1 Gen 2).

- Contents: Adapter



Value®

	Order-No. – P.U.
VALUE Type C - HDMI Adapter, M/F, 1x USB 3.2 Gen 1 A, 1x Type C (Power Delivery), 4K30	12.99.3199 – 10

Available January 2025

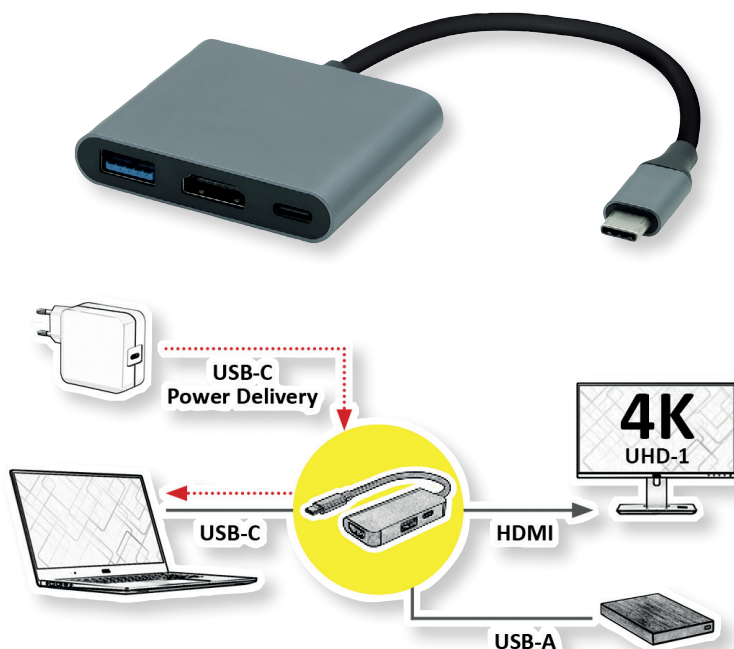
ROLINE Type C - HDMI Adapter, 4K60

Connect your Macbook, Ultrabook, Notebook/Laptop or PC with USB Type C interface to an HDMI display or projector - with a maximum resolution of up to 3840x2160 @60Hz! Charge your device simultaneously over PD (Power Delivery) and connect an additional peripheral or other device like a SSD to the additional USB Type A Port.

- USB 3.1 / USB 3.2 Gen 2 Type C to HDMI adapter for MacBook, Ultrabook, Notebook/Laptop or PC
 - Mirror or extend the display of your device to any HDMI monitor or projector
 - Maximum resolution: 3840x2160 @60Hz
 - No additional power supply required
 - USB Type C PD: Power Delivery Function for charging of devices via the additional Type C connection
 - Connectors: HDMI Female and Type C Male; additionally, 1x USB 3.0 / USB 3.2 Gen 1 Type A and 1x USB Type C PD
 - Cable length: ca. 12 cm
- Remark: Support of „Alternate Mode (DP Alt Mode)“ required

Note: According to the current specifications of USB.org we have adapted the technical data of our USB 3 products. The new designation for the already known USB specifications has been changed to USB 3.2 Gen 1 (formerly USB 3.0 / USB 3.1 Gen 1) and USB 3.2 Gen 2 (formerly USB 3.1 / USB 3.1 Gen 2).

• Contents: Adapter



Order-No. – P.U.

roline[®]
Designed for Professionals

Available January 2025

ROLINE Type C - HDMI Adapter, M/F, 1x USB 3.2 Gen 1 A, 1x Type C (Power Delivery), 4K60

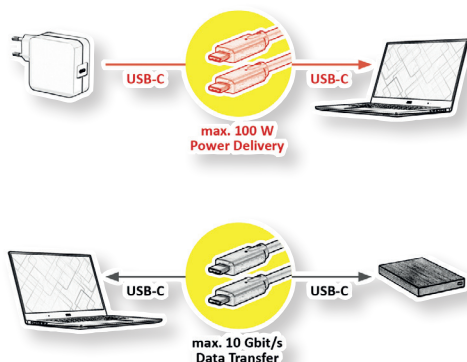
12.03.3199 – 10

VALUE Cable Compatible USB3.2 Gen2, PD (Power Delivery) 60W, with Emark, C-C

Full-featured USB 3.1 / USB 3.2 Gen 2 cable with a data transmission rate of up to 10 Gbit/s and full Power Delivery support of up to 60W!

- High quality USB 3.1 / USB 3.2 Gen 2 cable with improved shielding
- With the new reversible Type C connectors at both ends
- Gold-plated contacts for low wear at high plugging cycles
- Suitable for data transfer rates of up to 10 Gbit/s
- Supports USB Power Delivery to 60W
- Supports video transfer

Note: According to the current specifications of USB.org we have adapted the technical data of our USB 3 products. The new designation for the already known USB specifications has been changed to USB 3.2 Gen 1 (formerly USB 3.0 / USB 3.1 Gen 1) and USB 3.2 Gen 2 (formerly USB 3.1 / USB 3.1 Gen 2).



Order-No. – P.U.

Value[®]

Available January 2025

VALUE Cable Compatible USB3.2 Gen2, PD 60W, with Emark, C-C, M/M, 3 m

11.99.9065 – 10

VALUE Cable Compatible USB3.2 Gen2, PD 60W, with Emark, C-C, M/M, 5 m

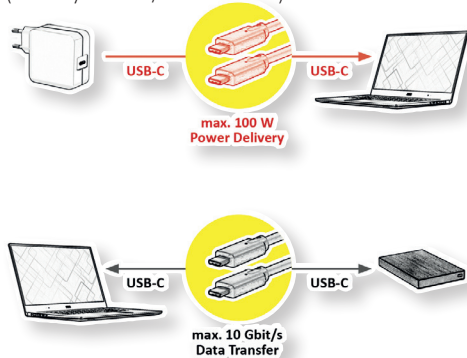
11.99.9066 – 10

ROLINE Cable Compatible USB3.2 Gen2, PD (Power Delivery) 100W, with Emark, C-C

Full-featured USB 3.1 / USB 3.2 Gen 2 cable with a data transmission rate of up to 10 Gbit/s and full Power Delivery support of up to 100W!

- High quality USB 3.1 / USB 3.2 Gen 2 cable with improved shielding
- With the new reversible Type C connectors at both ends
- Gold-plated contacts for low wear at high plugging cycles
- Suitable for data transfer rates of up to 10 Gbit/s
- Supports USB Power Delivery to 20V / 5A
- Supports video transfer

Note: According to the current specifications of USB.org we have adapted the technical data of our USB 3 products. The new designation for the already known USB specifications has been changed to USB 3.2 Gen 1 (formerly USB 3.0 / USB 3.1 Gen 1) and USB 3.2 Gen 2 (formerly USB 3.1 / USB 3.1 Gen 2).



	Order-No. – P.U.
ROLINE Cable Compatible USB3.2 Gen2, PD 100W, with Emark, C-C, M/M, black, 3 m	11.02.9065 – 10
ROLINE Cable Compatible USB3.2 Gen2, PD 100W, with Emark, C-C, M/M, black, 5 m	11.02.9066 – 10
ROLINE Cable Compatible USB3.2 Gen2, PD 100W, with Emark, C-C, M/M, black, 7 m	11.02.9067 – 10

roline[®]
Designed for Professionals

Available December 2024

ROLINE Thunderbolt™ 5 Cable, 80Gbit/s, 240W, C-C, Passive

16K 8640p

Thunderbolt 4 cables with the USB Type C connector offer you the currently highest possible data transfer rate of up to 80Gbit/s and full Power Delivery support (PD up to 240W)! The cables also feature DP mode for particularly high-resolution image and sound transmission of up to 7680x4320 @60Hz (8K).

- Thunderbolt 5 protocols allow maximum data transfer rates of up to 80Gbit/s and Bandwidth Boost with 120Gbit/s in asynchronous mode
- Display support is up to 3 x 4K@144 Hz or dual 8K @60 Hz
- DP mode for connecting a monitor with USB Type C / Thunderbolt 5 connector, with a maximum resolution of 7680x4320 @60Hz (8K)
- One of the best applications is to connect your Thunderbolt 5 cable with a Thunderbolt device like a corresponding MacBook and matching USB Type C monitor; If Thunderbolt 5 is supported, the full 8K resolution is possible (8K, 7680x4320 @60Hz with USB 3.1 support) and your device gets powered at the same time
- Supports USB Power Delivery up to 240W, for powering your Macbook, Ultrabook or notebook/laptop
- High-quality cable with improved shielding
- With reversible USB type C connector at both ends
- Gold plated contacts for low wear at high mating cycles
- Colour: black

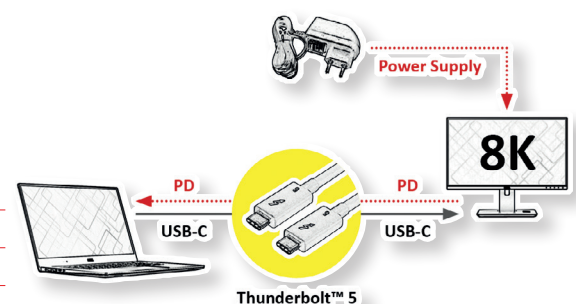
Thunderbolt and the Thunderbolt logo are trademarks of Intel Corporation in the U.S. and/or other countries.



roline[®]
Designed for Professionals

Available February 2025

	Order-No. – P.U.
ROLINE Thunderbolt™ 5 Cable, 80Gbit/s, 240W, C-C, M/M, passive, black, 0.5 m	11.02.9110 – 10
ROLINE Thunderbolt™ 5 Cable, 80Gbit/s, 240W, C-C, M/M, passive, black, 0.8 m	11.02.9111 – 10
ROLINE Thunderbolt™ 5 Cable, 80Gbit/s, 240W, C-C, M/M, passive, black, 1 m	11.02.9112 – 10

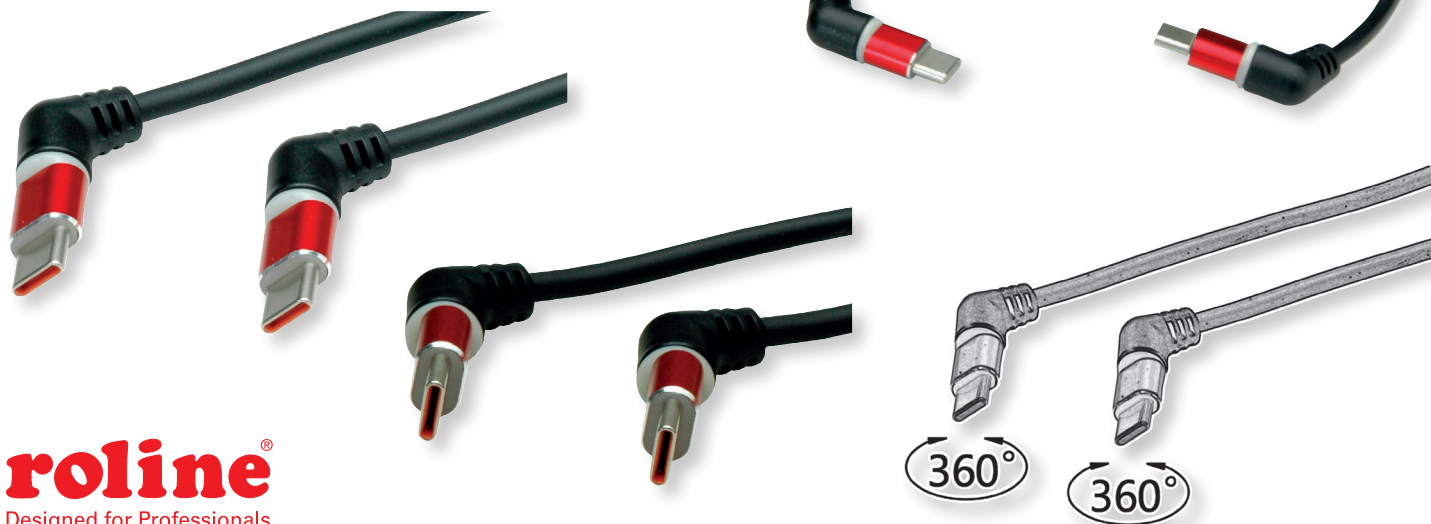


ROLINE 360° Rotation USB 2.0 Cable, C - C, Spiral

480Mbit/s

For connecting smartphones or tablets with USB Type C connection to a wall charger or e.g. for connection of hard disks (HDD/SSD) and other end devices.

- USB 2.0 connection cable with Type C to Type C male/male connector
- Suitable for data transfer rates of up to 480 Mbit/s
- Connectors: 2x USB type C connector
- **Can rotate 360° within the cable bend protection**
- Color: black/red



roline[®]
Designed for Professionals

Order-No. – P.U.

Available February 2025

ROLINE 360° Rotation USB 2.0 Cable, C - C, M/M, 60W, Red Black, 1.5 m

11.02.8350 – 10

ROLINE HDMI High Speed Cable + Ethernet, Slim, M/M

4K 2160p 3D capable

ROLINE HDMI cable with double-sided HDMI connection for connecting an ultra-book, notebook/laptop or PC to a monitor, TV or projector - for screen transmissions in excellent quality with a resolution of up to 3840x2160 @60Hz!

- HDMI is a universal connection standard for the transmission of video and audio signals. Applications include mainly the connection of monitors and televisions to computers, BluRay players and similar devices.
- The connector requires less space and is therefore more suitable for portable display devices (ultrabooks, notebooks/laptops) or for 2 connectors on a graphics card (on a slot plate).
- High-quality, double-shielded cable (foil+braid) with gold-plated contacts for optimum transmission of image signals
- Supports 3D video
- HDMI Ethernet channel
- Audio return channel for forwarding signals to the audio/video receiver.



roline[®]
Designed for Professionals

Order-No. – P.U.

Available November 2024

ROLINE HDMI High Speed Cable + Ethernet, Slim, M/M, black, 1 m

11.04.6015 – 20

ROLINE HDMI High Speed Cable + Ethernet, Slim, M/M, black, 1.5 m

11.04.6016 – 20

ROLINE HDMI High Speed Cable + Ethernet, Slim, M/M, black, 2 m

11.04.6017 – 20

ROLINE HDMI High Speed Cable + Ethernet, Slim, M/M, black, 3 m

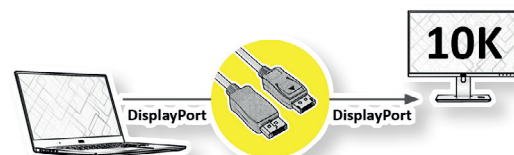
11.04.6018 – 20

VALUE DisplayPort Cable, v2.1, 10K, DP-DP

10K 4320p

DisplayPort Cable with DP connection on both sides for connecting an Ultrabook, Notebook/Laptop or PC to a monitor, TV or projector - for screen transmissions in excellent quality with resolutions of up to 10240x4320 @60Hz!

- DisplayPort is a universal connection standard for the transmission of picture and sound signals, widely known and appreciated in computer, industry and modern house wiring. Applications include mainly the connection of monitors or projectors to computers, notebooks/laptops, ultrabooks, NUCs and similar devices.
- The connector requires less space than VGA or DVI and is therefore more suitable for portable devices for two connectors on a graphics card (on one slot plate).
- DisplayPort v2.1 supports Display Stream Compression 1.2a (DSC), Forward Error Correction and the HDR10 standard.
- DP v2.1 can reach a maximum resolution of 10K (10240x4320) @60Hz or 4K (3840x2160) @120Hz
- The practical plug design prevents the cable from slipping out of the DisplayPort socket and guarantees a stable audio and video transmission.
- Compliant DP v2.1 (max. 10240 x 4320 @60Hz)



Available February 2025

	Order-No. – P.U.
VALUE DisplayPort Cable, v2.1, 10K@60Hz, 40Gbit/s, UHBR10, DP-DP, M/M, black, 1 m	11.99.6020 – 10
VALUE DisplayPort Cable, v2.1, 10K@60Hz, 40Gbit/s, UHBR10, DP-DP, M/M, black, 2 m	11.99.6022 – 10
VALUE DisplayPort Cable, v2.1, 10K@60Hz, 40Gbit/s, UHBR10, DP-DP, M/M, black, 3 m	11.99.6023 – 10
VALUE DisplayPort Cable, v2.1, 10K@60Hz, 40Gbit/s, UHBR10, DP-DP, M/M, black, 5 m	11.99.6024 – 10

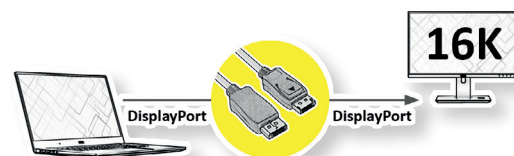
Value®

VALUE DisplayPort Cable, v2.1, 16K, DP-DP

16K 8640p

DisplayPort Cable with DP connection on both sides for connecting an Ultrabook, Notebook/Laptop or PC to a monitor, TV or projector - for screen transmissions in excellent quality with resolutions of up to 15360x8640 @60Hz!

- DisplayPort is a universal connection standard for the transmission of picture and sound signals, widely known and appreciated in computer, industry and modern house wiring. Applications include mainly the connection of monitors or projectors to computers, notebooks/laptops, ultrabooks, NUCs and similar devices.
- The connector requires less space than VGA or DVI and is therefore more suitable for portable devices for two connectors on a graphics card (on one slot plate).
- DisplayPort v2.1 supports Display Stream Compression 1.2a (DSC), Forward Error Correction and the HDR10 standard.
- DP v2.1 can reach a maximum resolution of 16K (15360x8640 @60Hz) or 4K (3840x2160) @120Hz
- The practical plug design prevents the cable from slipping out of the DisplayPort socket and guarantees a stable audio and video transmission.
- Compliant DP v2.1 (max. 15360x8640 @60Hz)



Available February 2025

	Order-No. – P.U.
VALUE DisplayPort Cable, v2.1, 16K@60Hz, 80Gbit/s, UHBR20, DP-DP, M/M, black, 1 m	11.99.6025 – 10
VALUE DisplayPort Cable, v2.1, 16K@60Hz, 80Gbit/s, UHBR20, DP-DP, M/M, black, 2 m	11.99.6026 – 10
VALUE DisplayPort Cable, v2.1, 16K@60Hz, 80Gbit/s, UHBR20, DP-DP, M/M, black, 3 m	11.99.6027 – 10
VALUE DisplayPort Cable, v2.1, 16K@60Hz, 80Gbit/s, UHBR20, DP-DP, M/M, black, 5 m	11.99.6028 – 10

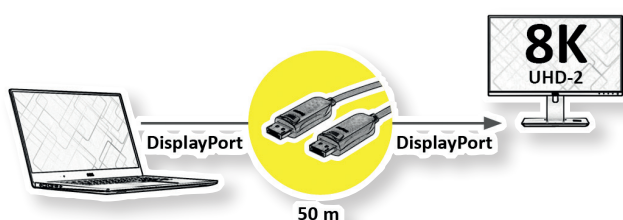
Value®

ROLINE DisplayPort Cables (AOC), DP80, 54Gbit/s, 8K

8K 4320p

With our UHD (7680x4320 @60Hz) capable DisplayPort fiber optic cable you have the possibility to connect up to 50m between your devices. The active cable (AOC) does not require a separate power supply and is particularly suitable for installation in the cable duct due to its small diameter.

- Total length of the end device distance (e. g. from notebook/laptop to beamer or PC to monitor): up to 15, 20, 30 or 50 meters
- Hardware solution, no software required
- A signal repeater is built into the connectors.
- No external power supply required; the cable contains a copper fibre for power supply



- Small connector and cable dimensions; the cable has a smaller diameter than comparable cables made of pure copper due to the glass fibres.
- The practical plug design prevents the cable from slipping out of the DisplayPort socket



Order-No. – P.U.

ROLINE DisplayPort Cable (AOC), DP80, 54Gbit/s, M/M, 15m	14.01.3501 – 1
ROLINE DisplayPort Cable (AOC), DP80, 54Gbit/s, M/M, 20m	14.01.3502 – 1
ROLINE DisplayPort Cable (AOC), DP80, 54Gbit/s, M/M, 30m	14.01.3503 – 1
ROLINE DisplayPort Cable (AOC), DP80, 54Gbit/s, M/M, 50m	14.01.3504 – 1

Available February 2025

roline[®]
Designed for Professionals

ROLINE USB4 Adapter, 100W, 40Gbit/s, Type C M/F, Aluminum

- USB 4 adapter, USB-C plug to USB-C female connector in various versions
- Used to connect the USB-C cable to the device at a 90° angle
- Supports a power supply of up to 100 W for fast charging
- Maximum data transfer rate of up to 40 Gbit/s
- Connectors: USB Type-C plug / USB Type-C socket
- Adapter housing made from aluminum
- Color: Space grey



12.03.2931



12.03.2932



12.03.2933



12.03.2934



12.03.2935

Order-No. – P.U.

ROLINE USB4 Adapter, 100W, 40Gbit/s, Type C M/F, Aluminum, Version 1	12.03.2931 – 10
ROLINE USB4 Adapter, 100W, 40Gbit/s, Type C M/F, Aluminum, Version 2	12.03.2932 – 10
ROLINE USB4 Adapter, 100W, 40Gbit/s, Type C M/F, Aluminum, Version 3	12.03.2933 – 10
ROLINE USB4 Adapter, 100W, 40Gbit/s, Type C M/F, Aluminum, Version 4	12.03.2934 – 10
ROLINE USB4 Adapter, 100W, 40Gbit/s, Type C M/F, Aluminum, Version 5	12.03.2935 – 10

Available February 2025

roline[®]
Designed for Professionals

ROLINE Cable Adapter RJ45 / USB Type C → Terminal Block Adapter, Push Button

This adapter cable can be used to extend/connect various network devices. Cables with stripped ends can be connected without tools via the terminal block with push-button.

Connections:

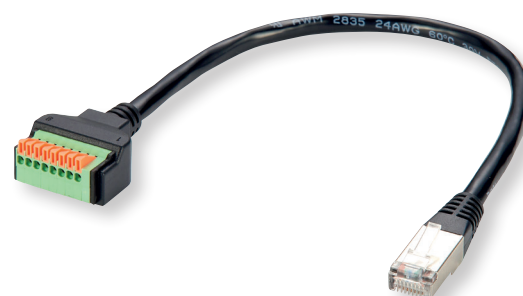
- 1 x RJ45 plug / jack
- 1 x 8-pin terminal block
- Pin assignment: 1:1
- Shielded (STP)
- Color: black / green / orange

The USB 2.0 adapter cable can be used to connect various USB type C devices. The stripped cable ends can be connected to the push-button connection block without tools.

Connections:

- 1 x USB type C plug
- 1 x 5 pin terminal block
- Color: black / green / orange

roline[®]
Designed for Professionals



	Order-No. – P.U.
ROLINE Cable adapter RJ45 plug > terminal block, push-button, 15 cm	12.02.1171 – 10
ROLINE Cable adapter RJ45 female > terminal block, push-button, 15 cm	12.02.1172 – 10

	Order-No. – P.U.
ROLINE Cable adapter USB Type-C Cable to Terminal Block Adapter, C (M) - 5 Pin (push button), 15 cm	12.02.1173 – 10

Available January 2025

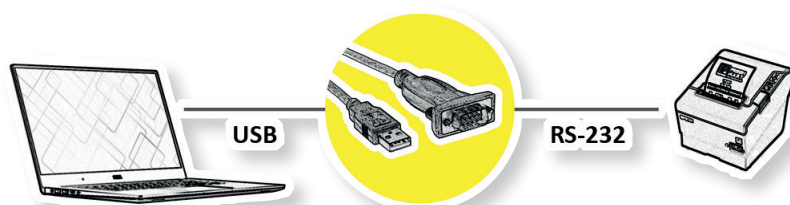
ROLINE Converter Cable USB to Serial, FTDI Chipset

With this converter you can easily connect peripheral devices, such as analogue and ISDN modems, digital cameras and handheld computers, which have a serial interface to an USB environment

- Easy installation
- True plug & play
- Supports automatic handshake mode
- Supports remote wake up and power management
- Needs no interrupt (IRQ)
- Length: 1.8 m
- FTDI Chipset
- Supported operating systems: Windows 98SE/ME/2000/XP/7/8 /10
- Contents: Converter cable, driver CD, manual



roline[®]
Designed for Professionals



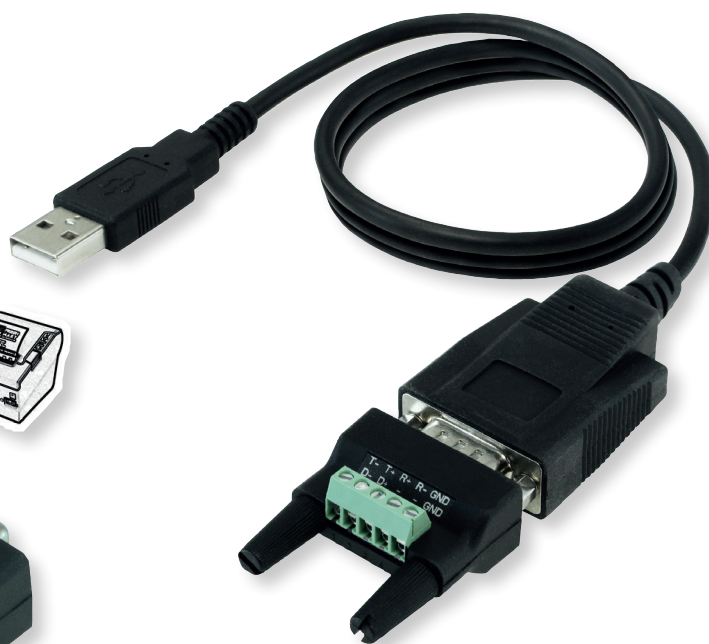
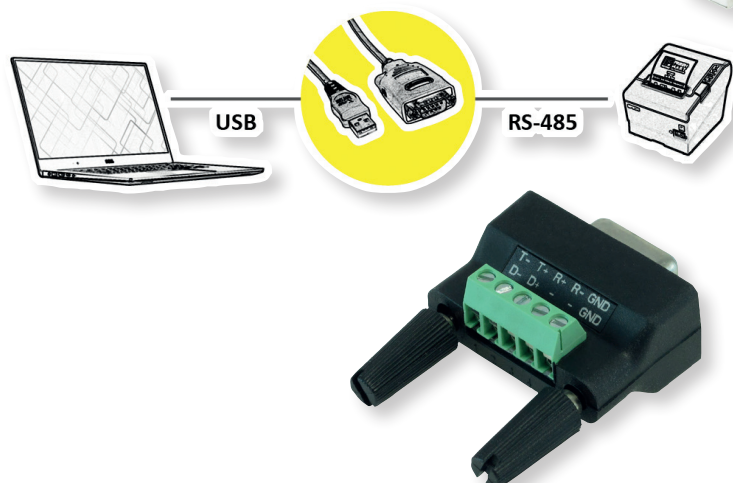
	Order-No. – P.U.
ROLINE Converter Cable USB to Serial, FTDI chipset, 1.8 m	12.02.1170 – 10

Available January 2025

ROLINE USB to RS-485 Converter

This converter provides an extra Serial RS-422/485 port via USB connection

- To connect serial devices (e.g. modem) to one USB port
- Can be configured to work with RS-485 peripherals
- Full compliance with the USB specification 1.1
- Supports data transfer rates of up to 921,6 kbit/s
- USB bus powered- no external power supply is needed
- Plug & play
- Supports Windows 7 / 8 / 10 (32/64-bit)
- Contents: Converter, manual, DB9 Female- 5Pin Terminal block adapter



Order-No. – P.U.

ROLINE USB to RS-485 Converter

12.02.1174 – 5

Available December 2024

roline[®]
Designed for Professionals

ROLINE External Type M.2 NVMe SSD Enclosure with USB 3.2 Gen 3x2 Type C

40Gbit/s

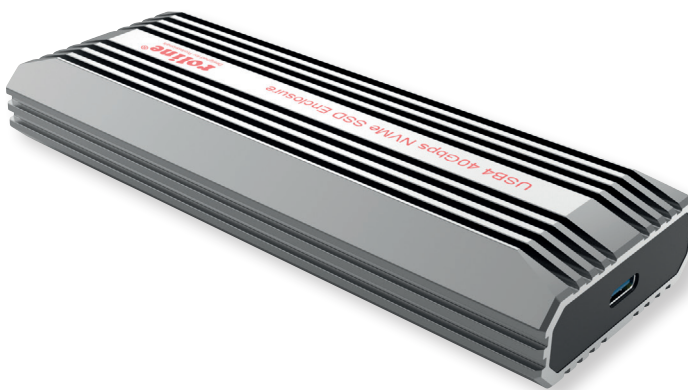
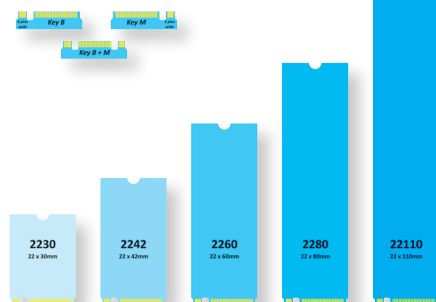
Empty housing made of matt aluminium for M.2 SSDs, for connection via USB 3.1 / USB 3.2 Gen 2 Type C

- Empty housing for M.2 SSDs with USB Type C connector
- External interface: USB type C
- **Compatible with USB 3.1 / USB 3.2 Gen 2x2 with data transfer rates up to 40 Gbps**
- Supports M.2 SSDs 2230, 2242, 2260, 2280 (M key)
- Matt, silver aluminium housing
- Contents: M.2 SSD Enclosure, manual, USB Type C cable

Note: According to the current specifications of USB.org we have adapted the technical data of our USB 3 products. The new designation for the already known USB specifications has been changed to USB 3.2 Gen 1 (formerly USB 3.0 / USB 3.1 Gen 1) and USB 3.2 Gen 2 (formerly USB 3.1 / USB 3.1 Gen 2).

- **REMARK:**
- the shown M.2 NVMe SSD is not included in the scope of delivery

Contact Shapes of Key B, Key M and Key B + M



Order-No. – P.U.

ROLINE External Type M.2 NVMe SSD Enclosure with USB 3.2 Gen 3x2 Type C

16.01.4149 – 10

Available January 2025

roline[®]
Designed for Professionals

VALUE PCIe Gigabit SFP Network Adapter (without Mini GBIC/SFP)

- PCIe 1G SFP Network Adapter is a cost-effective solution
- Delivers fast and reliable 1 Gbit/s network access at longer distances than copper-based networks
- Using SFP transceiver you can connect your PCI Express-based server or workstation directly to your 1G fiber optic network.
- Supports common 1G SFP optical and Direct Attached Copper modules
- EEE (Energy Efficient Ethernet)
- Up to 9.5K Jumbo Frames
- IP, TCP and UDP checksum offloading (IPv4, IPv6) capabilities
- Designed to meet PCI Express Specification Revision 2.1
- One lane (x1) PCI Express compatible with x4, x8 and x16 PCI Express slots
- IEEE 802.1Q Tagged VLAN
- Supports Preboot eXecution Environment (PXE)

Requirements

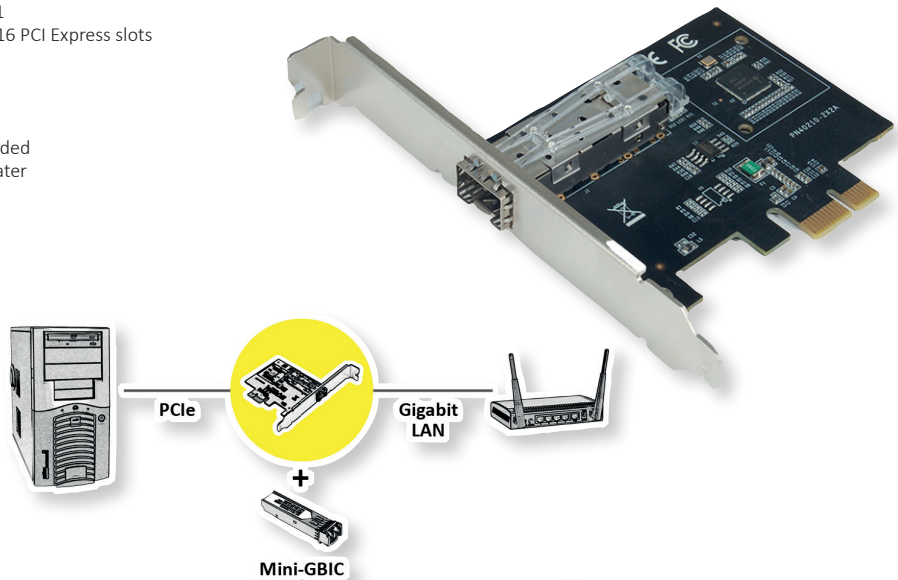
- Minimum hardware system specifications are recommended
- PCIe slot: Available 1-Lane PCI-Express slot Gen 2.0 or later
 - Processor: Quad Core 3.0GHz or higher
 - RAM: 4GB memory or higher

Software Operating systems supported (32/64 bits)

- Windows 7/8.x/10/11
- Windows Server 2008 R2/2012 R2/2016/2019/2022

- Contents: PCI Adapter, manual

- REMARK:
Suitable for SFP modules (21.99.3500 / 21.99.3499)



Order-No. – P.U.

VALUE PCIe Gigabit SFP Network Adapter

15.99.2188 – 5

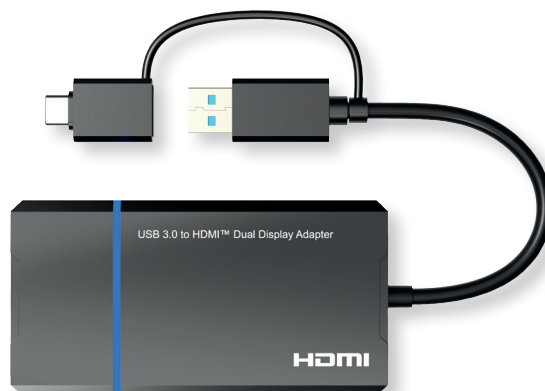
VALUE USB DisplayLink Adapter, USB A+C vers 2x HDMI

The display adapter allows the connection of 2 HDMI monitors via a USB 3.0 / USB 3.2 Gen 1 port of your computer - with a resolution of up to 3840x2160 @30Hz!

- Supports USB-A or USB-C port display connection to two HDMI displays
- Problem-free working with several monitors possible at the same time
- To mirror or expand your display to another display device
- Suitable for Ultrabooks, Notebooks/Laptops and PCs
- Max. Resolution: up to 4K@30Hz, 1920x1080 @60Hz
- No additional power supply necessary

Note: According to the current specifications of USB.org we have adapted the technical data of our USB 3 products. The new designation for the already known USB specifications has been changed to USB 3.2 Gen 1 (formerly USB 3.0 / USB 3.1 Gen 1) and USB 3.2 Gen 2 (formerly USB 3.1 / USB 3.1 Gen 2).

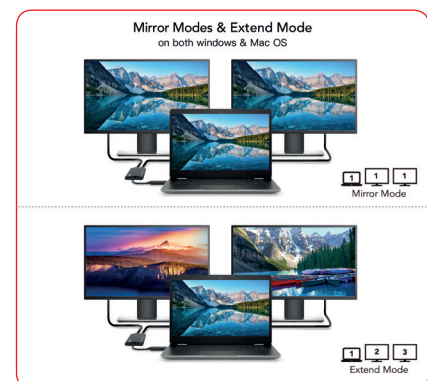
- Contents: USB Display Adapter



Order-No. – P.U.

VALUE USB DisplayLink Adapter, USB A+C vers 2x HDMI

12.99.3206 – 4



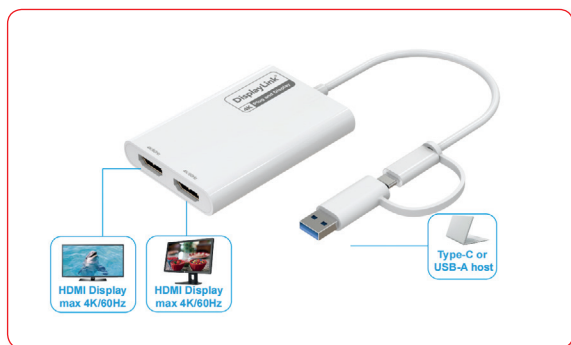
Available February 2025

ROLINE USB Type A+C - HDMI Multi-DisplayLink Adapter, 2x HDMI, 4K

Mirror or extend the display of your USB Type-C device to up to two HDMI displays - with a maximum resolution of 3840x2160 @60Hz!

- USB Type A + C to HDMI DisplayLink Adapter for Macbooks, Ultrabooks, Notebooks/ Laptops or PCs
- Supports up to 2 HDMI monitors/TV with 4K Ultra HD (3840 x2160) @60Hz each
- Connectors: 1x USB Type A+C male and 2x HDMI female
- Portable design
- No power adapter required
- Cable length: ca. 10 cm
- Source must support DisplayPort 1.4 on USB A host you need to install a corresponding driver

Remark: Support of „Alternate Mode (DP Alt Mode)“ required



roline[®]
Designed for Professionals

Available February 2025

Order-No. – P.U.

ROLINE USB Type A+C - HDMI Multi-DisplayLink Adapter, 2x HDMI, 4K

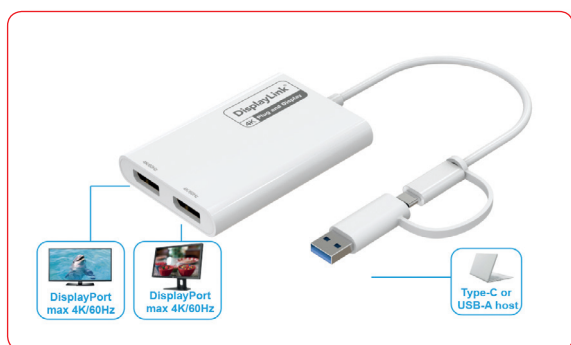
12.03.3206 – 2

ROLINE USB Type A+C - DP Multi-DisplayLink Adapter, 2x DP 4K

Mirror or extend the display of your USB Type-C device to up to two DP displays - with a maximum resolution of 3840x2160 @60Hz!

- USB Type A + C to HDMI DisplayLink Adapter for Macbooks, Ultrabooks, Notebooks/ Laptops or PCs
- Supports up to 2 DP monitors/TV with 4K Ultra HD (3840 x2160) @60Hz each
- Connectors: 1x USB Type A+C male and 2x DP female
- Portable design
- No power adapter required
- Cable length: ca. 10 cm
- Source must support DisplayPort 1.4 on USB A host you need to install a corresponding driver

Remark: Support of „Alternate Mode (DP Alt Mode)“ required



roline[®]
Designed for Professionals

Available February 2025

Order-No. – P.U.

ROLINE USB Type A+C - DP Multi-DisplayLink Adapter, 2x DP 4K

12.03.3207 – 2

ROLINE Wireless Charger (15W) / Car Smartphone Holder, Magnetic

Wireless Charging Smartphone holder for the car, for wireless charging of Qi-capable smartphones by induction - thanks to the integrated coil in the charger, the device can be charged very quickly and efficiently with up to 15W.

- Charges a compatible smartphone or other matching Qi devices
- One charging coil for up to 15W of power
- Ball joint for optimum adjustability
- For use in the car to avoid having to attach annoying cables directly to the smartphone
- Secure hold through clip
- Connection to Wireless Charger via USB Type C to USB Type C cable (plug/plug)
- 360° freedom of rotation – smartphone holder can be flexibly rotated 360°
- The base of the holder is attached to the air vent/slot in the car
- Due to the magnetic fastening, the use of the smartphone for navigation purposes is very practical and convenient
- Colour: black
- Contents: Car smartphone holder with integrated wireless charger, USB C-C charger cable, magnetic clip, operating instructions

- MagSafe is a new wireless charging technology developed exclusively for Apple products.
- The MagSafe charging method uses inductive charging with a maximum power of up to 15 watts.
- The difference between a MagSafe charger and a Qi-compatible charger is the use of magnets. The magnets used ensure that the smartphone remains securely and stably placed on the charger and can be charged without any concerns.
- Thanks to these magnets, a secure connection/alignment of the charging coil(s) to the smartphone is achieved, while at the same time ensuring efficient and optimal charging

Qi wireless charging: Qi is an interface standard for inductive power transmission (wireless charging) of the „Wireless Power Consortium“. Inductive charging requires two devices, a receiver (such as an iPhone 8/X) and a transmitter (charging station). The current is transmitted via coils that generate a magnetic field. The smartphone can absorb energy via this magnetic field and thus charge the integrated battery.

Order-No. – P.U.

ROLINE Wireless Charger (15W) and Car Smartphone Holder, Magnetic

19.11.1015 – 10



Available January 2025

ROLINE Wireless Charging Stand for Mobile Devices, 15W, Magnetic

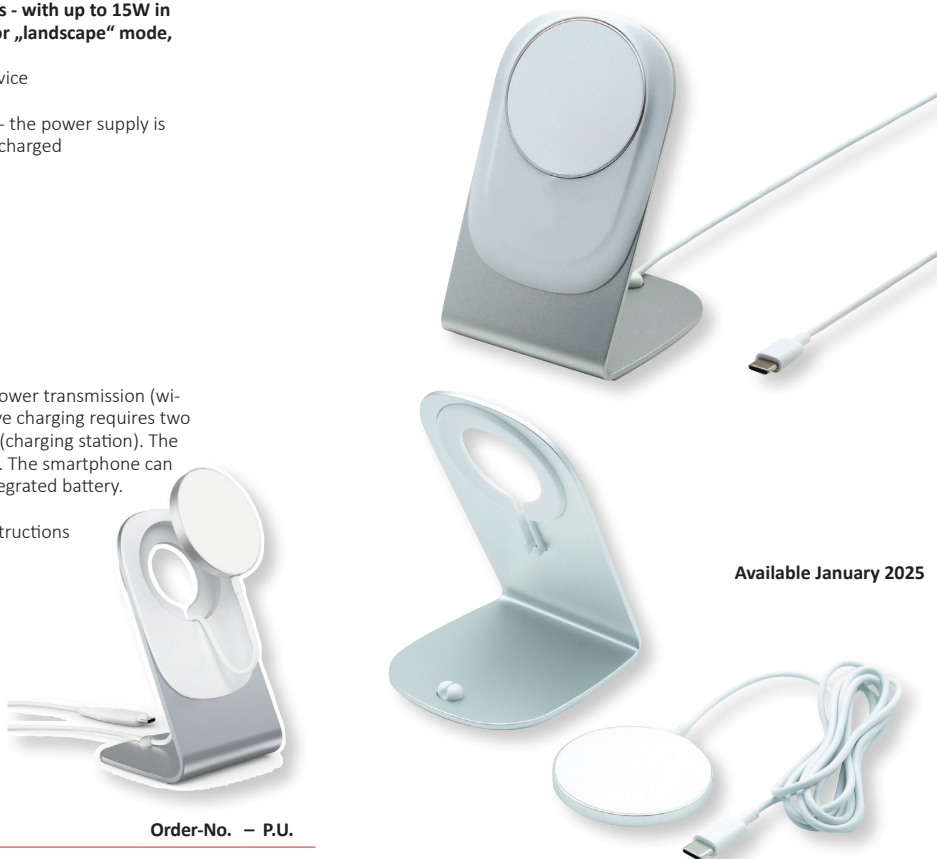
Wireless Charging Stand for matching smartphones or tablets - with up to 15W in the charger allow a smartphone to be charged in „portrait“ or „landscape“ mode, for example.

- Charges a Qi-compatible smartphone or other suitable Qi device
- Charging coil for up to 15W power
- Voltage regulation- designed for charging low-power devices- the power supply is automatically adjusted to the needs of the equipment being charged
- Plug & Play- No driver required
- Ideal for e.g. office or bedroom
- Colour: silver, white
- Cable length: ~150 cm
- Interface: USB Type-C
- Input current: 5V/3A, 9V/2.2A
- Material: Aluminum, PC
- Compatible with phones that support Qi wireless charging
- Power: 15W / 10W / 7.5W / 5W

Qi wireless charging: Qi is an interface standard for inductive power transmission (wireless charging) of the „Wireless Power Consortium“. Inductive charging requires two devices, a receiver (such as an iPhone 8/X) and a transmitter (charging station). The current is transmitted via coils that generate a magnetic field. The smartphone can absorb energy via this magnetic field and thus charge the integrated battery.

- Contents: charging station, USB charging cable, operating instructions

roline[®]
Designed for Professionals



Available January 2025

Order-No. – P.U.

ROLINE Wireless Charging Stand for Mobile Devices, 15W, magnetic

19.11.1016 – 10

ROLINE HDMI Video Splitter, 8K, 2x

8K 4320p

HDMI splitter for connecting up to two HDMI capable end devices (monitor, projector, etc) with 8K resolution (at 60 Hz)

- For use in presentations or for training purposes
- Maximum resolution: 7680 x 4320 @60Hz
- Support full 3D video format
- Support high definition resolution 8K@60Hz 4:4:4, 4K@120Hz and 1080P@240Hz
- HDCP 2.3/2.2/ 1.4 compliant
- Support uncompressed audio such as LPCM
- Support compressed audio such as DTS, Dolby Digital (including DTS-HD Master Audio™ and Dolby TrueHD)
- Support High Dynamic Range (HDR) video pass-through, such as HDR10/HDR10+/Dolby vision etc.
- Power supply via USB cable (Type A-C) (included)
- Contents: Splitter, USB cable (Type A-C)



Available December 2024

roline[®]
Designed for Professionals



Order-No. – P.U.

ROLINE HDMI Video Splitter, 8K, 2x

14.01.3558 – 2

Connection Diagram



ROLINE HDMI 1x2 Extender/Splitter via Cat.6A, 70m, 4K60Hz

4K 2160p ULTRA HD

The HDMI™ 1x2 Splitter extender is an ideal device for local displaying and remote viewing. It combines split function and extension function. It distributes the input of the HDMI™ signal into the local and remote outputs simultaneously, perfect for point-to-point digital signage applications that require high quality HDMI™ video up to 4K@60Hz 4:4:4. It also works to extend Infrared IR signals from remote controls, ideal for controlling your video source from your video destination.

Suitable for advertising, studios, multimedia classrooms, etc.

- Support high resolution up to 4K@60Hz YUV 4:4:4 at 70 meters.
- Support HDCP 2.2 and HDCP 1.4.
- Support High Dynamic Range (HDR) video.
- Support EDID and HDCP bypass.
- Support highest data transfer rate up to 6.0Gbps per channel (18Gbps all channels).
- TMDS clock can be up to 600MHz
- Support 12bit per channel (36bit all channels) deep color.
- Support uncompressed audio such as LPCM.
- Support compressed audio such as DTS, Dolby Digital.
- Supports single ended power supply feature, 12V power transmitted from sender to receiver
- Stable metal casing
- Dimensions: TX/RX: 101 x 89 x 23mm
- Power supply included in delivery
- Contents: Transmitter, Receiver, power supply (RX: 1x 12 VDC, 1A), manual
Transmitter (TX): 1x HDMI IN, 1x HDMI LOOP OUT, 1x RJ-45, 1x IR OUT
Receiver (RX): 1x HDMI OUT, 1x RJ-45, 1x IR IN



Available December 2024

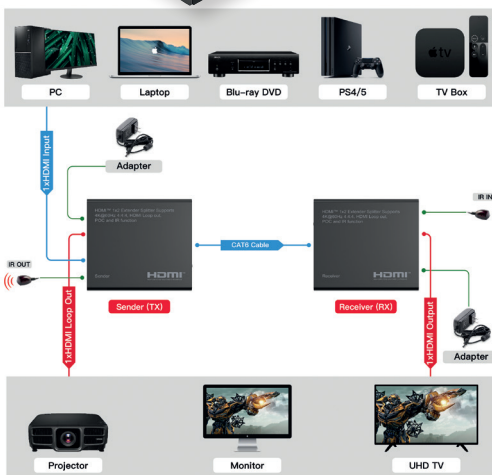
roline[®]
Designed for Professionals



Order-No. – P.U.

ROLINE HDMI 1x2 Extender/Splitter via Cat.6A, 70m, 4K60Hz

14.01.3643 – 2

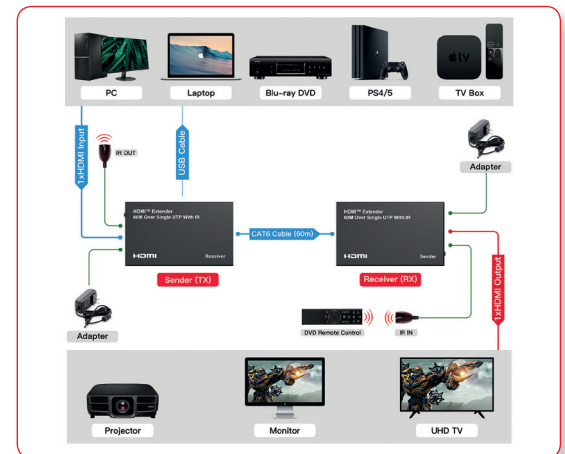


VALUE HDMI Extender over Twisted Pair, 60m

1080p
FULL HD

- The transmission distance of the HDMI signal can be extended up to 60 meters by using two Cat. 5e/6 cables
- Max. resolution (nominal) while using Cat.5e/6/6A cables, 60 m: 1080p
- HDCP pass-through
- Supports transmitting lossless uncompressed A/V signal
- IR signal transmission for easy control of the source device
- Stable metal casing
- Power supply included in delivery
- Contents: Transmitter (1x RJ-45 F, HDMI F), Receiver (1x RJ-45, HDMI F), 1x power supply (5V DC, 1A) for receiver, manual

Available December 2024



Order-No. – P.U.

VALUE HDMI Extender over Twisted Pair, 60m

14.99.3569 – 2

ROLINE HDMI over IP Extender 4K30Hz Rx+Tx, 120m, W/IR

4K

2160p
ULTRA HD

HDMI video extender via IP and twisted pair cable up to 120 meters at up to 4K 30Hz

Suitable for advertising, studios, multimedia classrooms, etc.

- Following TCP/IP standard
- Supports resolution up to 480p/720p/1080i/1080p/4K@30Hz at 120m
- Supports max video bandwidth to 3.4Gbps/340MHz per channel (10.2Gbps all channels)
- CAT5e/6 cable follows the standard of IEEE-568B
- Features IR return which enables you to control the video source from your video destination
- Features 2 extension modes: simple mode (1:1) and allocation mode (1:N)



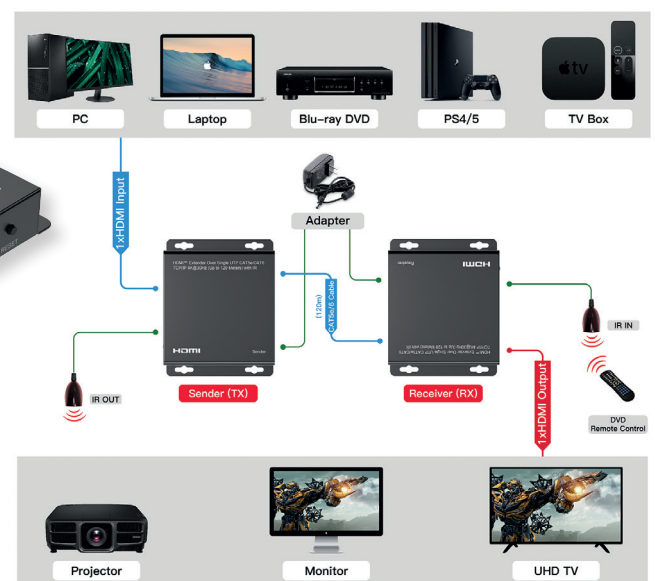
roline
Designed for Professionals



- Max. supported resolution: 4K30Hz
- Stable metal casing
- Dimensions: TX/RX: 120x95x24mm
- Power supply included in delivery
- Contents: 1x Transmitter, 1x Receiver, 2x power supply (TX: 1x 5 VDC, 1A, RX: 1x 5VDC, 1A), manual

Available December 2024

(1) Simple Mode



Order-No. – P.U.

ROLINE HDMI over IP Extender 4K30Hz Rx+Tx, 120m, W/IR

14.01.3642 – 2

ROLINE HDMI 4x1 Switch, 8K60Hz with IR

8K

4320p

Displays the video output from 4 HDMI sources alternately on a monitor or a projector.

- Example of use: An LCD monitor is supplied with power from two different HDMI sources such as a DVD player or notebook. The desired source can be selected at the push of a button. Or, if only one source is active at a time, the switch will automatically switch to it.
- Switching between the PCs is done with a button on the switch
- Supports 8K (7680x4320 @60Hz)
- Resolution: up to 480p, 720p, 1080i, 2160p, 4320p
- Installation is easy- no software, just connect the cables and you're done.
- Black body
- Powered by USB, USB cable (type A- micro B) included

Technical specifications:

- Input : 4x HDMI A socket
- Output: 1x HDMI A socket
- Contents: HDMI Switch, USB cable type A-micro B, manual



Available December 2024

roline[®]
Designed for Professionals

Order-No. – P.U.

ROLINE HDMI 4x1 Switch, 8K60Hz with IR

14.01.3587 – 5



Connection Diagram



VALUE HDMI 4x2 QUAD Multi-Viewer with Seamless Switch

1080p

FULL HD

Displays the video output of up to 4 HDMI sources on two monitors or projectors.

- Application example: display device (monitor/TV/beamer) are powered by several HDMI sources such as BluRay players, etc. By pressing the button, the desired source can be selected for the displays or up to four sources at a time using different display options. Or, if only one source is active at a time, the switch automatically changes to this source.
- Switching between PCs is done via buttons on the switch or via remote control
- Supports 1080p (1920x1080 @60Hz), 4K@30Hz (3840x2160)
- Installation is possible without software- only the HDMI cables have to be connected to the Quad Multi Viewer.
- Flat, black metal housing
- Remote control and IR receiver included
- Power supply included in delivery

Technical data:

- Input: 4x HDMI A Female
- Output: 2x HDMI A Female
- Contents: HDMI Switch, main adapter, remote control



Value[®]

Available December 2024

Order-No. – P.U.

VALUE HDMI 4x1 QUAD Multi-Viewer with Seamless Switch

14.99.3592 – 2

Connection Diagram



ROLINE HDMI 4x1 QUAD Multi-Viewer with Seamless Switch, 4K

4K

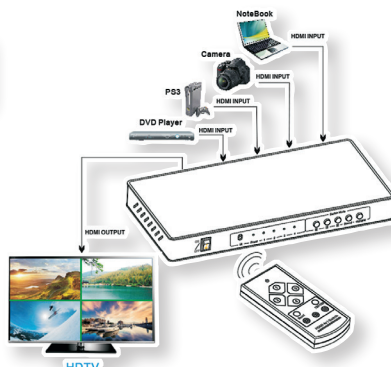
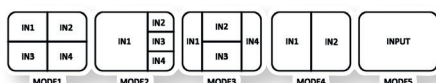
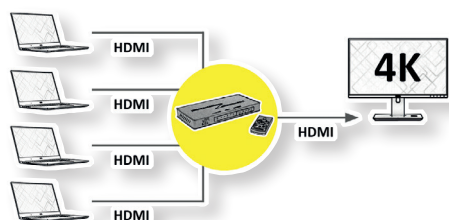
2160p
ULTRA HD

Displays the video output of up to 4 HDMI sources on a monitor or projector.

- Application example: A display device (monitor/TV/beamer) is powered by several HDMI sources such as BluRay players, etc. By pressing the button, the desired source can be selected for single display or up to four sources at a time using different display options. Or, if only one source is active at a time, the switch automatically changes to this source.
- Switching between PCs is done via buttons on the switch or via remote control
- Supports 3840x2160 @60Hz
- Installation is possible without software- only the HDMI cables have to be connected to the Quad Multi Viewer.
- Flat, black metal housing
- Remote control and IR receiver included
- Power supply included in delivery

Technical data:

- Input: 4x HDMI A Female
- Output: 1x HDMI A Female
- Contents: HDMI Switch, main adapter, remote control



Order-No. – P.U.

roline®
Designed for Professionals



ROLINE HDMI 4x1 QUAD Multi-Viewer with Seamless Switch, 4K

14.01.3596 – 1

VALUE 4K HDMI Matrix Switch, 4 x 2, with Remote Control

4K

2160p
ULTRA HD

- Four HDMI input signals can be switched to two HDMI output devices
- Outputs: 1x Toslink/SPDIF, 1x Stereo RCA
- Supports Ultra HD 4K@60Hz
- Max. resolution (nominal): 3840 x 2160 @60Hz
- Supports 480i, 480p, 720i, 720p, 1080i and 1080p
- HDCP compatible
- Supports Blu-ray, UHD Blu-ray, satellite receiver, game consoles, PCs, etc.
- Supported digital audio formats: DTS-HD/Dolby-TrueHD/LPCM/DTS/Dolby-Digital
- Input devices can be switched by IR remote control or by push buttons on the switch
- Contents: Switch, power supply, remote control, manual
- Contents: HDMI Matrix Switch, power supply, remote control, QIG



Available December 2024

Order-No. – P.U.

VALUE 4K HDMI Matrix Switch, 4 x 2, with Remote Control

14.99.3591 – 5

Connection Diagram



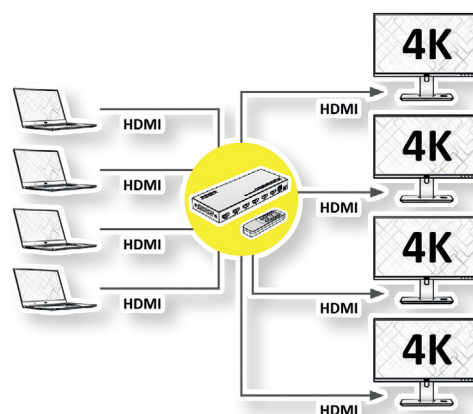
VALUE 4K HDMI Matrix Switch, 4 x 4, with Remote Control

1080p
FULL HD

- Four HDMI input signals can be switched to two HDMI output devices
 - Supports Ultra HD 4K@60Hz
 - Max. resolution (nominal): 3840 x 2160 @60Hz
 - Supports 480i, 480p, 720i, 720p, 1080i and 1080p
 - HDCP compatible
 - Supports Blu-ray, UHD Blu-ray, satellite receiver, game consoles, PCs, etc.
 - Supported digital audio formats: DTS-HD/Dolby-TrueHD/LPCM7.1/DTS/Dolby-Atmos
 - Input devices can be switched by IR remote control or by push buttons on the switch
- Contents: HDMI Matrix Switch, power supply, remote control, QIG



Available December 2024



Order-No. – P.U.

VALUE 4K HDMI Matrix Switch, 4 x 4, with Remote Control

14.99.3593 – 2

ROLINE Power Strip, UTE, 4-way, with Switch, Fast Charger, 1x USB A+C

Power strip with safety shutter sockets

- 4-way power strip with plastic housing
- Sockets are 45° rotated
- With 2-pole rocker switch
- Supply cable 1.5 m with angled safety plug
- USB charging connection: 5V DC max 2.4A (1x USB A + 1x USB C)
- Child protection
- Individually switchable, illuminated
- Colour: white



Order-No. – P.U.

ROLINE Power Strip, UTE, 4-way, with Switch, Fast Charger, 1x USB A+C, 1.5 m

19.07.2346 – 20

ROLINE Power Strip, UTE, 4-way, with Switch, Fast Charger, 1x USB A+C, 3 m

19.07.2347 – 10

roline[®]
Designed for Professionals

ROLINE Power Strip, 4-way, with Switch, round, Fast Charger, 1x USB A+C

Power strip with safety shutter sockets

- 4-way power strip with plastic housing
- Sockets are ring-shaped
- With push switch in the center
- 1.5m/3m supply cable with low-profile angled safety plug and latch for easy unplugging
- USB charging connection: 5V DC max 2.4A (1x USB A + 1x USB C)
- Colour: blue/white



Order-No. – P.U.

ROLINE Power Strip, 4-way, with Switch, round, Fast Charger, 1x USB A+C, blue, 1.5 m	19.07.2340 – 20
ROLINE Power Strip, 4-way, with Switch, round, Fast Charger, 1x USB A+C, blue, 3 m	19.07.2341 – 10
ROLINE UTE Power Strip, 4-way, with Switch, round, Fast Charger, 1x USB A+C, blue, 1.5 m	19.07.2342 – 20
ROLINE UTE Power Strip, 4-way, with Switch, round, Fast Charger, 1x USB A+C, blue, 3 m	19.07.2343 – 10

roline[®]
Designed for Professionals

ROLINE Power Strip, 3-way, with Switch, Fast Charger, 1x USB A+C

Power strip with safety shutter sockets

- 3-way power strip with plastic housing
- Sockets are 45° rotated
- With 2-pole rocker switch
- 1.5m / 3m supply cable with low-profile angled safety plug and latch for easy unplugging
- USB charging connection: 5V DC max 2.4A (1x USB A + 1x USB C)
- Individually switchable, illuminated
- Colour: blue/white



Order-No. – P.U.

ROLINE Power Strip, 3-way, with Switch, Fast Charger, 1x USB A+C, blue, 1.5 m	19.07.2344 – 20
ROLINE Power Strip, 3-way, with Switch, Fast Charger, 1x USB A+C, blue, 3 m	19.07.2345 – 10

roline[®]
Designed for Professionals

ROLINE Universal Swivel & Tilt Credit Card Terminal Stand

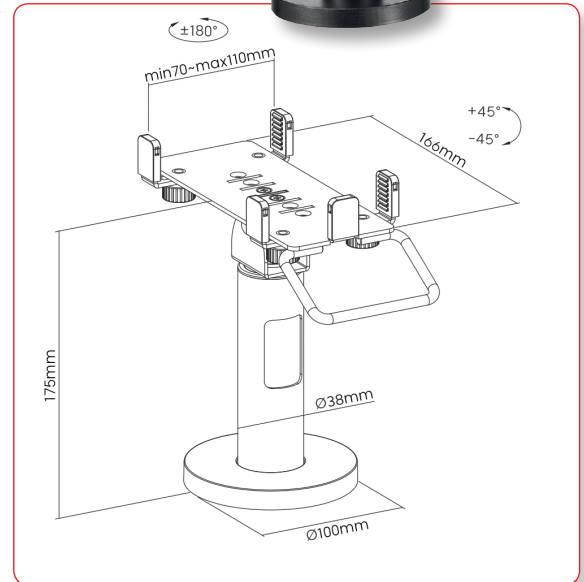
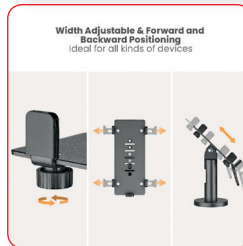
This is a perfect stand for securely mounting a credit card terminal on a countertop with a bolt down base.

The width-adjustable mounting clamps can be adjusted to fit 166mm x (min. 70mm – max. 110mm) wide devices and the panel can move forward and backward for flexible positioning.

It swivels 360° and tilts up or down for easy accessibility. Built-in cable management keeps everything clean and concealed.

- Width Adjustment: fits a variety of appliance/device sizes and shapes
- Swivel Joint: offers maximum viewing flexibility
- Toolless Tilt: allows for effortless positioning
- Silicone Pad: prevents the device from scratching and accidental dropping (securely hold the device in place)

Material: Aluminum, Steel, Plastic
 Surface Finish: Powder Coating
 Panel Size: 166mm x (min. 70mm – max. 110mm)
 (6.5" x (min. 2.8" – max. 4.3"))
 Applicable Device: Universal
 Tilt Range: +45° – -45°
 Swivel Range: +180° – -180°
 Profile: 175mm (6.9")
 Cable Management: Yes



roline[®]
 Designed for Professionals

Order-No. – P.U.

ROLINE Universal Swivel & Tilt Credit Card Terminal Stand

17.03.0118 – 100

VALUE TV Monitor Arm, Wall Mount, < 81cm, < 20kg, 2 Joints

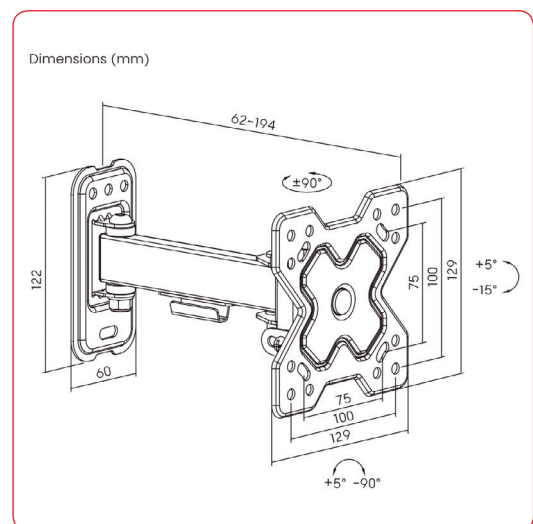
- Quick and simple installation
- Meets VESA 75/100
- Wall mount fixing
- Material: steel
- Colour: black

TV size: 33 - 81.3 cm (13" - 32")
 Load capacity: up to 20 kg
 Max. arm length: 62 ~ 194mm (2.4" ~ 7.6")
 VESA Compatible: 75x75, 100x100
 Max. Mounting Hole: 100x100
 Tilt Range: +5° ~ -15°
 Swivel Range: +90° ~ -90°
 Screen Rotation: +5° ~ -90°

Value[®]



Available February 2025



Order-No. – P.U.

VALUE TV Monitor Arm, Wall Mount, < 81cm, < 20kg, 2 Joints

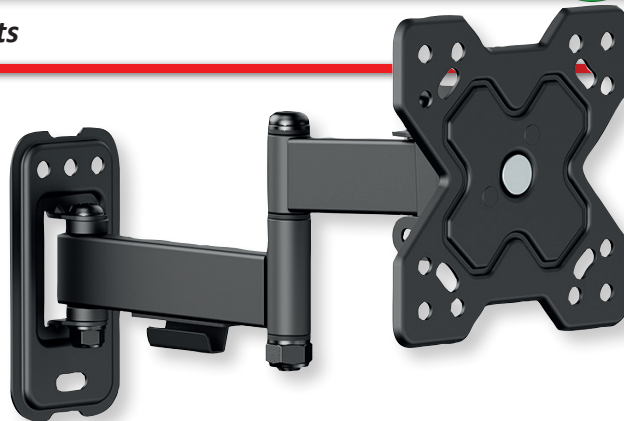
17.99.1230 – 8

VALUE TV Monitor Arm, Wall Mount, < 81cm, < 20kg, 3 joints

- Quick and simple installation
- Meets VESA 75/100
- Wall mount fixing
- Material: steel
- Colour: black

TV size: 33 - 81.3 cm (13" - 32")
 Load capacity: up to 20 kg
 Max. arm length: 62 ~ 270mm (2.4" ~ 10.6")
 VESA Compatible: 75x75, 100x100
 Max. Mounting Hole: 100x100
 Tilt Range: +5° ~ -15°
 Swivel Range: +90° ~ -90°
 Screen Rotation: +5° ~ -90°

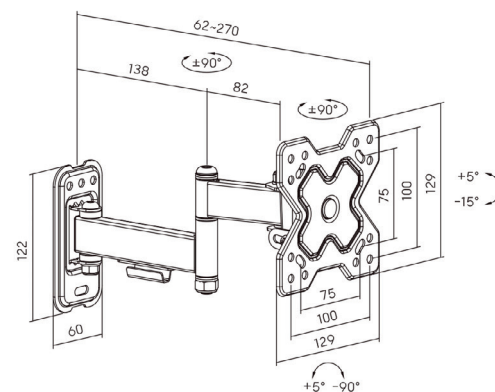
Value®



Available February 2025



Dimensions (mm)



Order-No. – P.U.

VALUE TV Monitor Arm, Wall Mount, < 81cm, < 20kg, 3 Joints

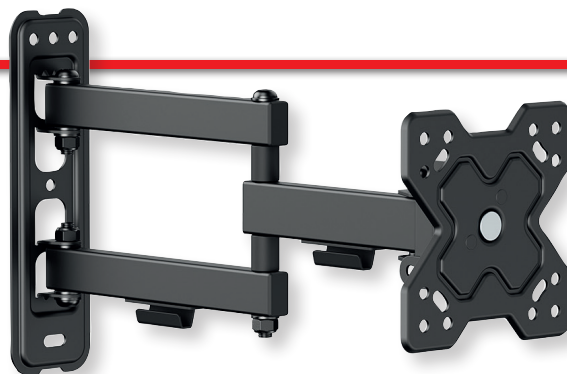
17.99.1231 – 4

VALUE TV Monitor Arm, Wall Mount, < 81cm, < 20kg, 3 Joints

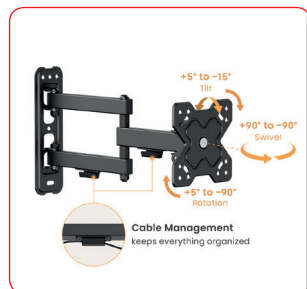
- Quick and simple installation
- Meets VESA 75/100
- Wall mount fixing
- Material: steel
- Colour: black

TV size: 33 - 81.3 cm (13" - 32")
 Load capacity: up to 20 kg
 Max. arm length: 62 ~ 366mm (2.4" ~ 14.4")
 VESA Compatible: 75x75, 100x100
 Max. Mounting Hole: 100x100
 Tilt Range: +5° ~ -15°
 Swivel Range: +90° ~ -90°
 Screen Rotation: +5° ~ -90°

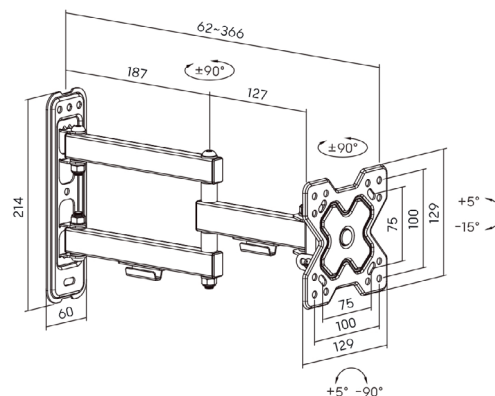
Value®



Available February 2025



Dimensions (mm)



Order-No. – P.U.

VALUE TV Monitor Arm, Wall Mount, < 81cm, < 20kg, 3 Joints

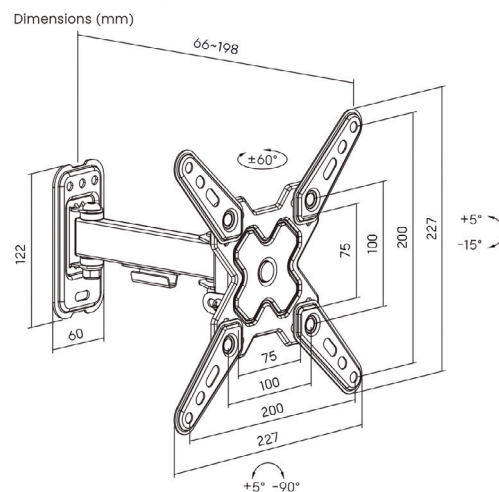
17.99.1232 – 4

VALUE TV Monitor Arm, Wall Mount, < 109cm, < 20kg, 2 Joints

- Quick and simple installation
- Meets VESA 75x75, 100x100, 100x200, 200x100, 200x200
- Wall mount fixing
- Max. Mounting Hole: 200x200
- Material: steel
- TV size: 33 - 109 cm (13" - 43")
- Max. Load Capacity: 20 kg
- Profile: 66 ~ 198mm
- Tilt Range: +5° ~ -15°
- Range: +60° ~ -60°
- Screen Rotation: +5° ~ -90°
- Colour: black



Available February 2025



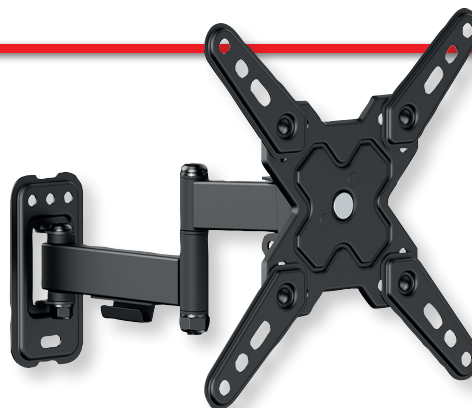
Order-No. – P.U.

VALUE TV Monitor Arm, Wall Mount, < 109 cm, < 20kg, 2 Joints

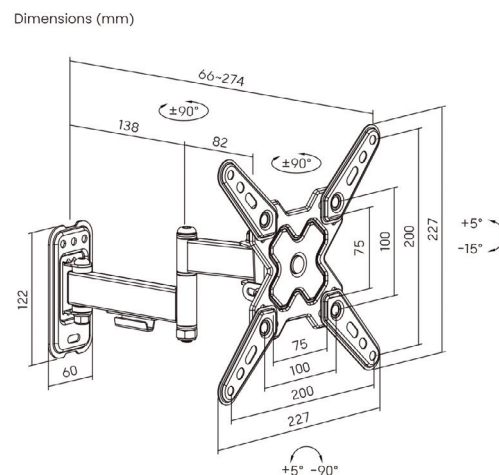
17.99.1233 – 8

VALUE TV Monitor Arm, Wall Mount, < 109cm, < 20kg, 3 Joints

- Quick and simple installation
- TV size: 33- 109,2 cm (13" - 43")
- VESA Compatible: 75x75, 100x100, 100x200, 200x100, 200x200
- Max. Mounting Hole: 200x200
- Wall mount fixing
- Max. Load Capacity: 20kg
- Profile: 66 ~ 274mm
- Tilt Range: +5° ~ -15°
- Swivel Range: +90° ~ -90°
- Screen Rotation: +5° ~ -90°
- Material: steel
- Colour: black



Available February 2025



Order-No. – P.U.

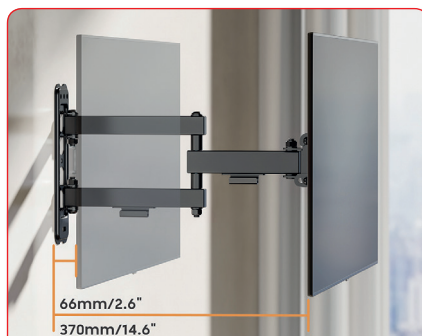
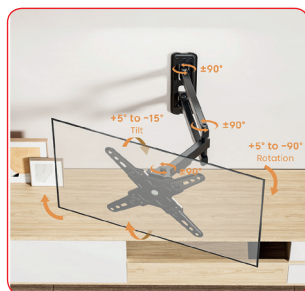
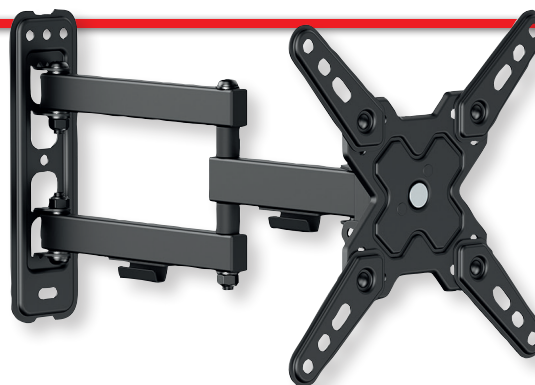
VALUE TV Monitor Arm, Wall Mount, < 109 cm, < 20kg, 3 Joints

17.99.1234 – 4

VALUE TV Monitor Arm, Wall Mount, < 109cm, < 20kg, 3 Joints

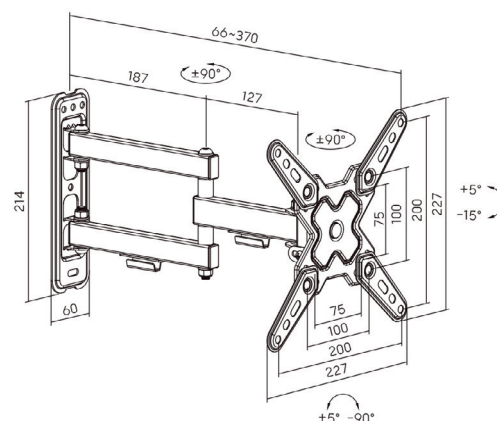
- Quick and simple installation
- TV size: 33- 109,2 cm (13"- 43")
- VESA Compatible: 75x75,100x100,100x200,200x100,200x200
- Wall mount fixing
- Mounting Hole Pattern: VESA Only
- Max. Mounting Hole: 200x200
- Max. Load Capacity: 20kg
- Profile: 66 ~ 370mm
- Tilt Range: +5° ~ -15°
- Swivel Range: +90° ~ -90°
- Screen Rotation: +5° ~ -90°
- Material: steel
- Colour: black

Available February 2025



Smooth Movement with Ample Range of Motion

Dimensions (mm)



Order-No. – P.U.

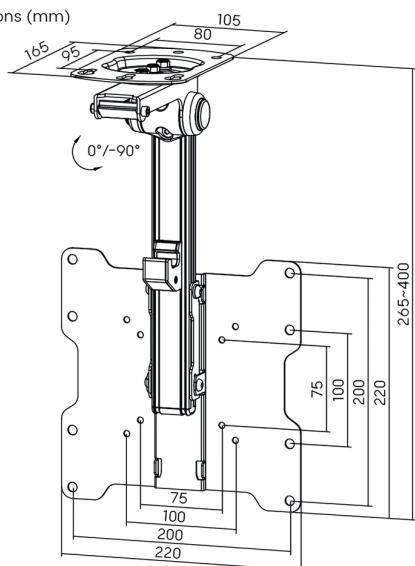
VALUE TV Monitor Arm, Wall Mount, < 109 cm, < 20kg, 3 Joints

17.99.1235 – 4

VALUE LCD TV Ceiling Mount (Sloping roof)

- Firm mounting of a LCD monitor on a ceiling
- Arm length: 26.5- 40 cm
- Load capacity: up to 20 kg
- Profile: 85mm
- Tilt Range: 0°/-90°
- Swivel Range: +45° ~ -45°
- Meets VESA 75x75, 100x100, 200x100, 200x200 mm
- Contents: Ceiling mount, mounting material, manual

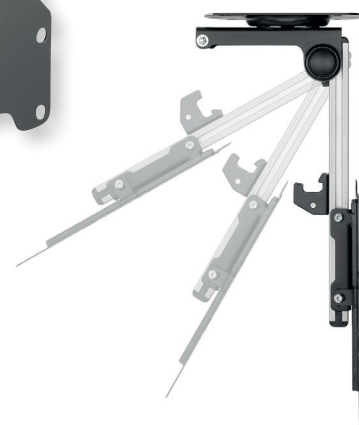
Dimensions (mm)



Order-No. – P.U.

VALUE LCD TV Ceiling Mount (Sloping roof)

17.99.1186 – 8

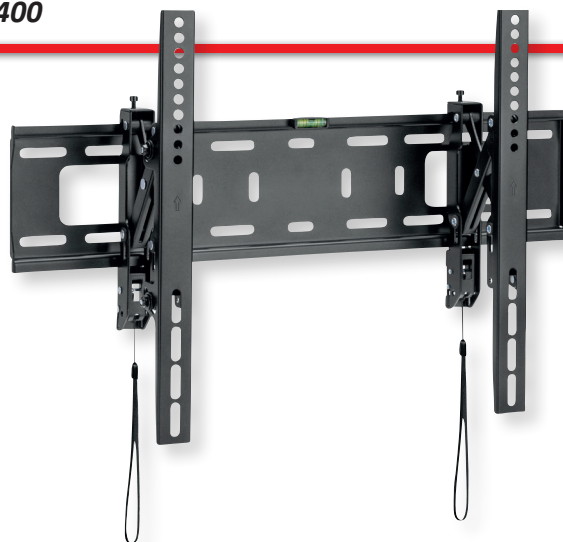
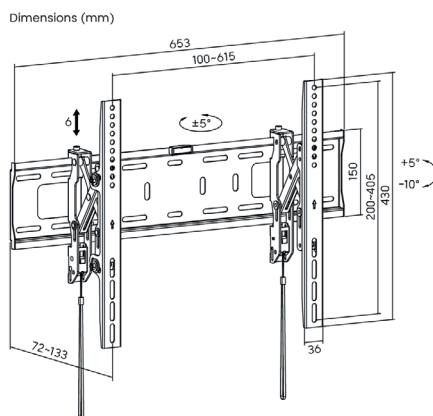


VALUE TV Wall Mount, 72mm Wall Distance, < 75kg, VESA 600x400

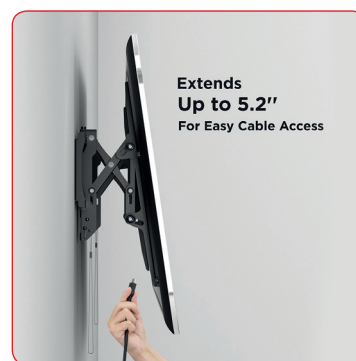
Stable and tiltable TV wall mount with just 72mm wall distance - the load capacity is up to 75kg and the mount supports maximum VESA 600x400.

- For screens from 37 inch to 80 inch (max. VESA 600x400)
- VESA Compatible: 200x200, 200x300, 300x200, 200x400, 400x200, 300x300, 300x400, 400x300, 600x200, 400x400, 600x300, 600x400
- Load capacity up to 75kg
- Tiltable suspension
- Tilt range: +5° – -5°
- Wall distance of 72- 132 mm
- Securing against unintentional loosening of the mounting hooks
- Integrated spirit level

Available December 2024



Extends
Up to 5.2"
For Easy Cable Access



Order-No. – P.U.

VALUE TV Wall Mount, 72mm Wall Distance, < 75kg, VESA 600x400, tiltable

17.99.1185 – 4

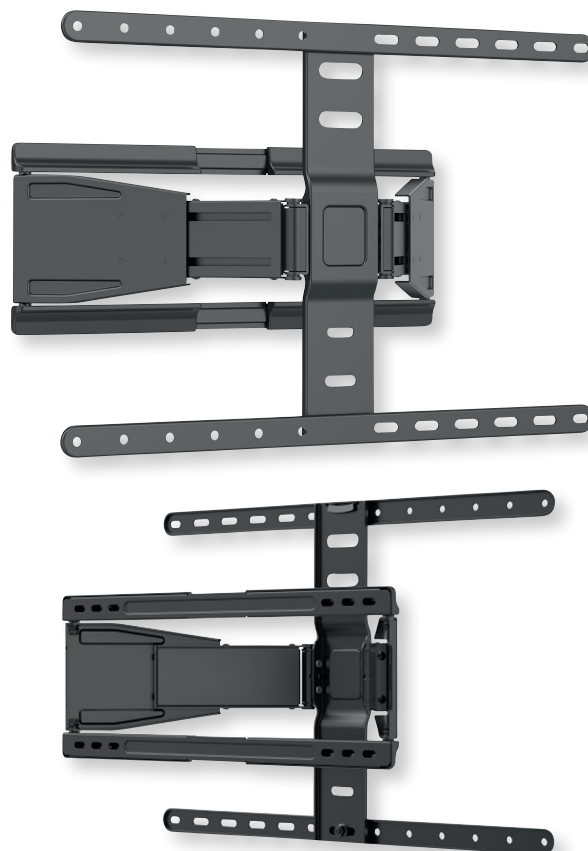
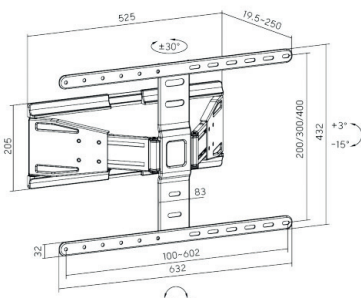
VALUE Solid Articulating Wall Mount TV Holder, up to 228.6cm (43" - 90")

- Dual-arm full-motion wall mount for TVs (LED, LCD flat panel TVs) up to 228,6cm (43" - 90")
- Ultra-slim design: Profile 19.50- 250 mm (0.77" - 9.80")
- Max. weight: 50kg
- This mount extends out between 19.50 and 250 mm from wall and allows TVs to turn 30° left or right
- Full motion allows maximum flexibility- tilts and swivel your TV for easy viewing from any seat in a room
- Post-installation level adjustment allows the TV to „roll“ up to 3° clockwise and counterclockwise to ensure it's perfect level
- Integrated cable management system keeps cables organized and protected
- Wide wall plate fits for 406/450mm stud installation

Technical Data:

- Material: Steel
- Recommended Screen Size: up to 228.6 cm (43"-90")
- Installation: Solid wall, Double Stud
- Max. Load Capacity: 50kg
- VESA Standard: 100x200, 200x200, 200x300, 300x200, 200x400, 400x200, 300x300, 300x400, 400x300, 600x200, 400x400, 600x300, 600x400
- Max.VESA: 600x400
- Tilt: 3°~15°
- Swivel: -30°~+30°
- Level

Available December 2024



Order-No. – P.U.

VALUE Solid Articulating Wall Mount TV Holder, up to 228.6cm (43" - 90")

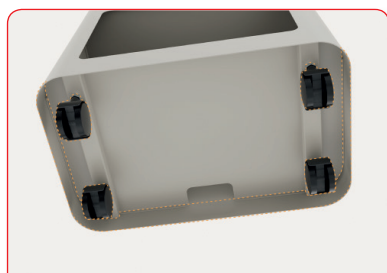
17.99.1188 – 3

VALUE Open Shelf Mobile Cabinet

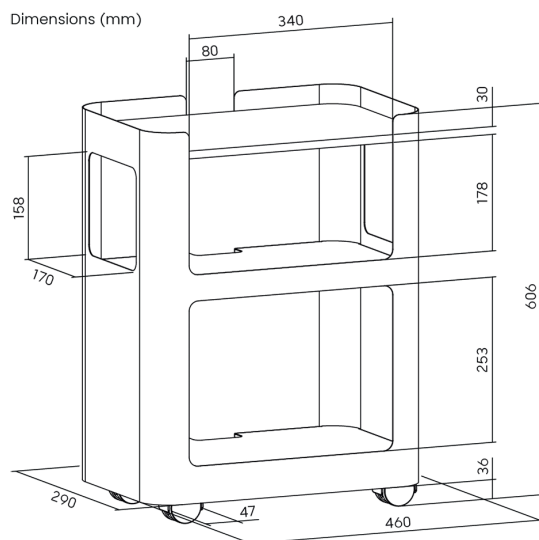
Open Shelf Mobile Cabinet is a versatile storage solution with distinctive features.

The rounded corners ensure greater aesthetics and safety. The cable management system ensures a tidy appearance. Thanks to the generous storage space, your belongings remain organized and accessible. The hidden 360° swivel castors not only provide an elegant touch, but also effortless mobility.

- Equipment Shelf: provides more storage space for accessories
- Curved-Edges and Corners
- Cable Management
- Hidden Casters in the Base
- Mobile via 4 wheels
- Max. Load: 10 kg (top) / 20 kg (middle) / 20 kg (bottom)
- Colour: white
- Dimensions (H x W x D): 61 x 46 x 29 cm
- Table top thickness 16mm (Melamine)



Hidden 360° Swivel Casters
provide both aesthetic appeal and ease of movement



Available December 2024

Value®

Order-No. – P.U.

VALUE Open Shelf Mobile Cabinet, white

17.99.1187 – 1

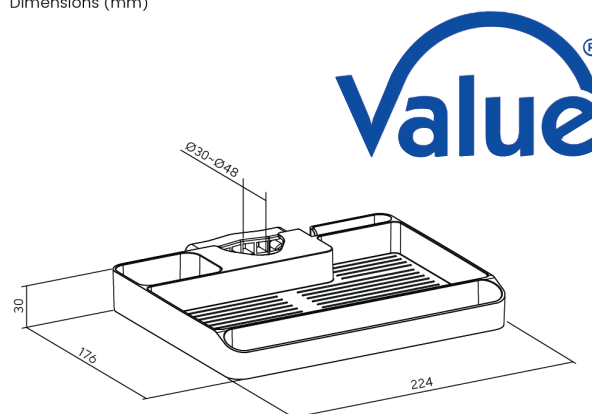
VALUE Pole Mounted Storage Shelf

- Easily mounted to poles with a diameter of 30- 48mm
- Designed with a universal adjustable clamp, this storage shelf can be an accessory for monitor mounts, TV stands and TV carts with a pole with a diameter of 30- 48mm.
- Provides efficient storage
- Includes a slot for a phone and a tool holder for different-sized Allen Keys.
- The cable management keeps cables organized
- Load capacity: up to 3 kg



Available December 2024

Dimensions (mm)



Value®

Order-No. – P.U.

VALUE Pole Mounted Storage Shelf

17.99.1184 – 10



SECOMP International AG

Grindelstrasse 6
8303 Bassersdorf
Switzerland

PHONE +41 44 511 87 62
FAX +41 44 511 87 07
E-MAIL info@secomp-international.com

www.secomp-international.com



WAREHOUSE

SECOMP International

Einsteinstrasse 17 - 23
76275 Ettlingen
Germany



SECOMP Germany

Einsteinstrasse 17 - 23
76275 Ettlingen
Germany

PHONE +49 7243 383 111
FAX +49 7243 383 222
E-MAIL info@secomp.de

www.secomp.de



SECOMP Switzerland

Grindelstrasse 6
8303 Bassersdorf
Switzerland

PHONE +41 44 511 87 00
FAX +41 44 511 87 05
E-MAIL info@secomp.ch

www.secomp.ch



SECOMP France

Allée des Sarments, Bâtiment F - Lot 9
77183 Croissy Beaubourg
France

PHONE +33 164 80 92 30
FAX +33 164 80 92 40
E-MAIL info@secomp.fr

www.secomp.fr



SECOMP Netherlands

Christiaan Huygensweg 38 H
3225 LD Hellevoetsluis
Netherlands

PHONE +31 181 390 030

E-MAIL info@secomp.nl

www.secomp.nl



SECOMP Czechia

IMPERA PARK, Budova H, Oděská 333/5
196 00 Praha 9
Czech Republic

PHONE +420 281 861 849
FAX +420 281 862 729
E-MAIL secomp@secomp.cz

www.secomp.cz