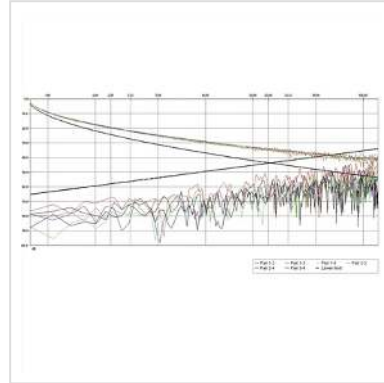


ROLINE UTP Cable Cat.5e (Class D), Stranded Wire, 100 m

Product No.	21.15.0518
Manufacturer	ROLINE
Manufacturer No.	21.15.0518
EAN (single piece)	7611990161089



- Structured building wiring
- Impedance: 100 Ohm
- 3P verified
- Colour: Grey
- Construction 21.15.0518: 8 lines, copper, stranded wire AWG24
- Diagram: attenuation/near end crosstalk

For a structured cabling system we recommend to use the following components:

ROLINE Cat.5e UTP Cable, Solid Wire, AWG24: 21.15.0512 (100 m), 21.15.0511 (300 m)

ROLINE Cat.5e Flush/Surface Mount Wall Jack, unshielded: 25.16.8506 (white), 25.16.8501 (ivory)/25.16.8406 (white), 25.16.8401 (ivory)

ROLINE Cat.5e 19" Patch Panel, 24 Ports, unshielded: 26.11.0349 (black), 26.11.0347 (light grey)

ROLINE Cat.5e UTP Patch Cord, grey, 5 m: 21.15.0505

Our in-house laboratory has tested this cable-plug combination, in a Channel of 100 meters, in compliance with Class D specifications.

Technical specifications

Manufacturer	ROLINE
Product group	Twisted Pair Cable
Product type	Raw cable Cat.5e
Colour	grey
Length	100 m
Contents	100 m
Shield type	UTP
Transfer quality	Cat5e / Class D
Impedance	100 Ohm
Quantity of wires	8
Conductor cross section (AWG)	AWG 24
Conductor type	Wire
Cable LSOH	no
Material (external cable mantle)	PVC
Weight	3657.6 g
Height of packaging (single piece)	290 mm
Width of packaging (single piece)	180 mm
Depth of packaging (single piece)	290 mm
Package weight (single piece)	3.424 kg