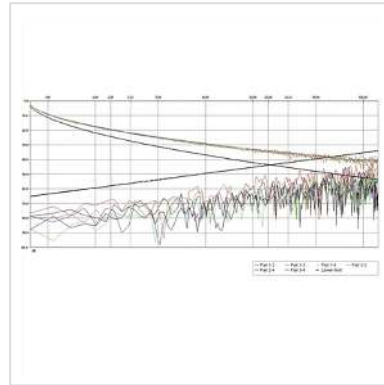


**ROLINE UTP Cable Cat.5e (Class D), Stranded Wire,  
300 m**

<b>Product No.</b>	21.15.0520
<b>Manufacturer</b>	ROLINE
<b>Manufacturer No.</b>	21.15.0520
<b>EAN (single piece)</b>	7611990137183



- Structured building wiring
- Impedance: 100 Ohm
- 3P verified
- Colour: Grey
- Construction 21.15.0520: 8 lines, copper, stranded wire AWG24
- Diagram: attenuation/near end crosstalk

For a structured cabling system we recommend to use the following components:

ROLINE Cat.5e UTP Cable, Solid Wire, AWG24: 21.15.0512 (100 m), 21.15.0511 (300 m)

ROLINE Cat.5e Flush/Surface Mount Wall Jack, unshielded: 25.16.8506 (white), 25.16.8501 (ivory)/25.16.8406 (white), 25.16.8401 (ivory)

ROLINE Cat.5e 19" Patch Panel, 24 Ports, unshielded: 26.11.0349 (black), 26.11.0347 (light grey)

ROLINE Cat.5e UTP Patch Cord, grey, 5 m: 21.15.0505

Our in-house laboratory has tested this cable-plug combination, in a Channel of 100 meters, in compliance with Class D specifications.

## Technical specifications

Manufacturer	ROLINE
Product group	Twisted Pair Cable
Product type	Raw cable Cat.5e
Colour	grey
Length	300 m
Contents	300 m
Shield type	UTP
Transfer quality	Cat5e / Class D
Impedance	100 Ohm
Quantity of wires	8
Conductor cross section (AWG)	AWG 24
Conductor type	Wire
Cable LSOH	no
Material (external cable mantle)	PVC
Weight	10.33 kg
Height of packaging (single piece)	250 mm
Width of packaging (single piece)	380 mm
Depth of packaging (single piece)	370 mm
Package weight (single piece)	12.4 kg