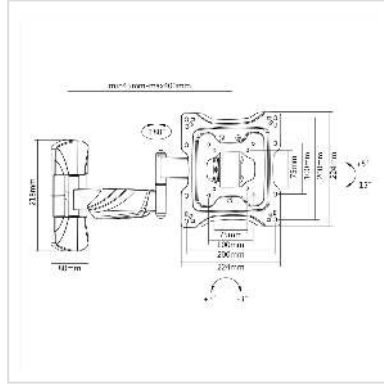


# VALUE LCD/TV Wall Mount, 5 Joints

<b>Product No.</b>	17.99.1143
<b>Manufacturer</b>	VALUE
<b>Manufacturer No.</b>	17.99.1143
<b>EAN (single piece)</b>	7611990150113



- Arm length: up to 425 mm
- Max. load: 25 kg
- Mounts your screen to the wall and monitor can be tilted ,swiveded and rotated
- Meets VESA 75 x 75 mm, VESA 100 x 100 mm, VESA 100 x 200 mm, VESA 200 x 200 mm
- Colour: black

## Technical specifications

Manufacturer	VALUE
Product group	LCD-Monitor arms
Product type	Monitor Arms, wall mount
Colour	black
Scope of delivery	supporting arm, mounting screws, 6 mm hex wrench, manual
Maximum weight capacity	25 kg
Quantity of pivots	5
Fixing	Wandbefestigung
Maximal arm length	400 mm
Adjustments	Adjustable spring gauge
Number of monitors	1

Max. Screen diagonal (cm)	106.68 cm
Max. Screen diagonal (inch)	42 inch
VESA 75 x 75 mm	yes
VESA 100 x 100 mm	yes
VESA 200 x 100 mm	yes
VESA 200 x 200 mm	yes
Material group	metal
Weight	2266.6 g
Height of packaging (single piece)	55 mm
Width of packaging (single piece)	270 mm
Depth of packaging (single piece)	330 mm
Package weight (single piece)	2.68 kg