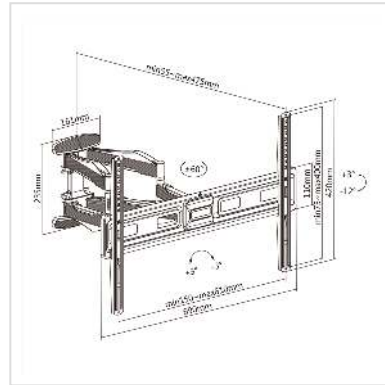
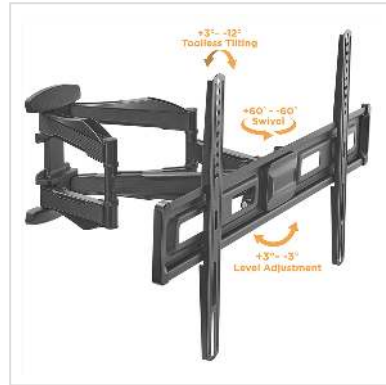


# VALUE Solid Articulating Wall Mount TV Holder, up to 177.8cm (37" - 70"), < 45 kg

<b>Product No.</b>	17.99.1211
<b>Manufacturer</b>	VALUE
<b>Manufacturer No.</b>	17.99.1211
<b>EAN (single piece)</b>	7630049625075



## Flexibly adjustable wall mount for TV monitors with diagonals from 37" to 80".

- Dual-arm full-motion wall mount for TVs (LED, LCD flat panel TVs) up to 203,2cm (37" - 80")
- Max. weight: 45 kg
- This mount extends out 400mm from wall and allows TVs to turn left or right
- Full motion allows maximum flexibility - tilts and swivel your TV for easy viewing from any seat in a room
- Post-installation level adjustment allows the TV to "roll" up to 3° clockwise and counterclockwise to ensure it's perfect level
- Integrated cable management system keeps cables organized and protected
- Wide wall plate fits for stud installation

### Technical Data:

- Material: Steel
- Product weight: 5kg
- Recommended Screen Size: up to 203.2 cm (37"-80")
- Installation: Solid wall, Double Stud
- Max. Load Capacity: 45 kg
- Max. Hole Pattern: 400 x 400mm
- VESA Standard: 200x200, 400x200, 300x300, 400x300, 400x300, 400x400
- Max. VESA: 400x400
- Tilt: -12°
- Level

Technical specifications	
Manufacturer	VALUE
Product group	LCD-Monitor arms
Product type	TV Wall Mount
Colour	black
Maximum weight capacity	45 kg
Fixing	Wall mount
Adjustments	Adjustable spring gauge
Inclinable	yes
Rotatable	yes
Number of monitors	1
Max. Screen diagonal (cm)	203.2 cm
Max. Screen diagonal (inch)	80 inch
Min. Screen diagonal (cm)	94 cm
Min. Screen diagonal (inch)	37 inch
VESA 200 x 200 mm	yes
VESA 300 x 200 mm	yes
VESA 300 x 300 mm	yes
VESA 400 x 200 mm	yes
VESA 400 x 300 mm	yes
VESA 400 x 400 mm	yes
Material group	metal
Weight	4227.4 g
Height of packaging (single piece)	70 mm
Width of packaging (single piece)	270 mm

Depth of packaging (single piece)	720 mm
Package weight (single piece)	4 kg