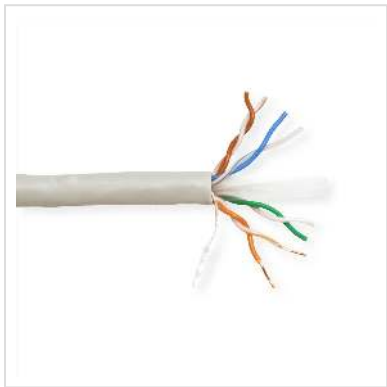


VALUE UTP Cable Cat.6 (Class E), Solid Wire, AWG24, 300 m, 300 m

Product No.	21.99.0995
Manufacturer	VALUE
Manufacturer No.	21.99.0995
EAN (single piece)	7611990179091



- Structured building wiring
- Impedance: 100 Ohm
- Colour: Grey
- Construction: 8 lines, copper, solid wire AWG24

For a structured cabling system we recommend to use the following components:

- VALUE Cat.6 UTP Cable, Solid Wire, AWG24, 300 m: 21.99.0995
- VALUE Cat.6 Flush/Surface Mount Wall Jack, unshielded, white: 25.99.8494/25.99.8394
- VALUE Cat.6 19" Patch Panel, 24 Ports, unshielded: 26.99.0351 (black), 26.99.0352 (grey)
- VALUE Cat.6 UTP Patch Cord, grey, 5 m: 21.99.0905

Our in-house laboratory has tested this cable-plug combination, in a Channel of 100 meters, in compliance with Class E specifications.

Technical specifications	
Manufacturer	VALUE
Product group	Twisted Pair Cable

Product type	Installation cable
Colour	grey
Length	300 m
Contents	300 m
Shield type	UTP
Transfer quality	Cat6 / Class E
Impedance	100 Ohm
Quantity of wires	8
Conductor cross section (AWG)	AWG 24
Conductor type	Solid wire
Cable LSOH	no
Material (external cable mantle)	PVC
Fire protection class	Eca
Weight	11301.6 g
Height of packaging (single piece)	420 mm
Width of packaging (single piece)	420 mm
Depth of packaging (single piece)	470 mm
Package weight (single piece)	12.1 kg